



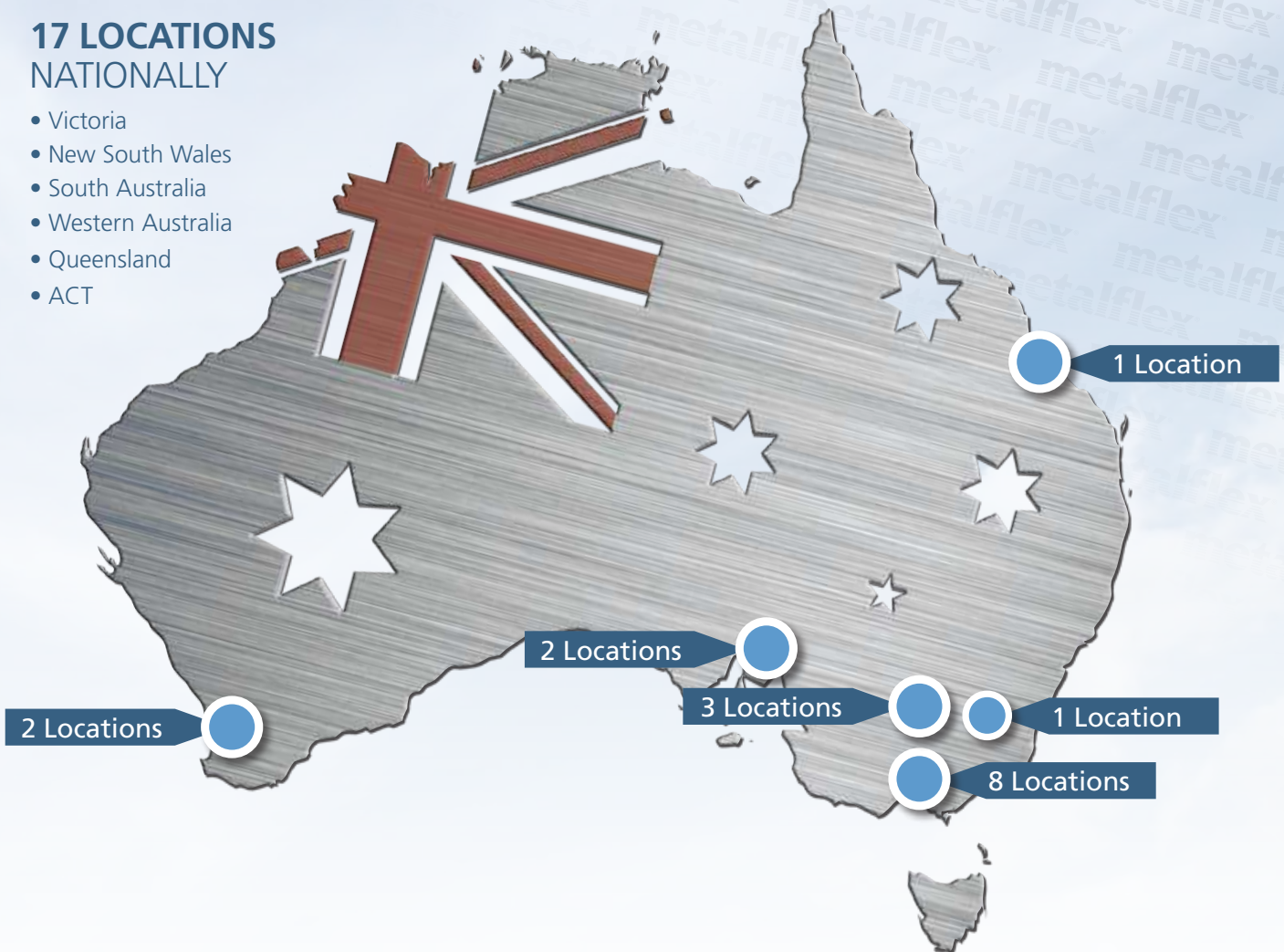
**AIRCONDITIONING
COMPONENTS**

2014 ▶ 2015

NATIONAL Branch Network

17 LOCATIONS NATIONALLY

- Victoria
- New South Wales
- South Australia
- Western Australia
- Queensland
- ACT



VIC

BALLARAT

6 Production Drive,
Alfredton, VIC 3350
Phone: (03) 5342 9657
Fax: (03) 5342 9645

BENDIGO

2 Fitt Court,
Bendigo, VIC 3550
Phone: (03) 5442 5689
Fax: (03) 5444 2234

BORONIA

32 Kalman Drive,
Boronia, VIC 3155
Phone: (03) 9720 5500
Fax: (03) 9720 6044

DANDENONG

85 Rodeo Drive,
Dandenong, VIC 3175
Phone: (03) 9794 0606
Fax: (03) 9794 0609

GEELONG

5 Tarkin Court,
Bell Park, VIC 3215
Phone: (03) 5277 0233
Fax: (03) 5278 4888

SUNSHINE

3/82-100 North View Drive,
Sunshine, VIC 3020
Phone: (03) 9465 9922
Fax: (03) 9312 1233

THOMASTOWN

13-17 Brand Drive,
Thomastown, VIC 3074
Phone: (03) 9465 9922
Fax: (03) 9465 9966

TRARALGON

1/366 Princes Highway,
Traralgon, VIC 3844
Phone: (03) 5176 0400
Fax: (03) 5176 5820

NSW

ALBURY

32 Merkel Street,
Thurgoona, NSW 2640
Phone: (02) 6025 8591
Fax: (02) 6025 8148

ROOTY HILL

4 Kellogg Road,
Rooty Hill, 2766
Phone: (02) 9832 8951
Fax: (02) 9625 5956

WAGGA WAGGA

8 Saxon Street,
Wagga Wagga, NSW 2650
Phone: (02) 6925 2715
Fax: (02) 6925 2015

ACT

CANBERRA (Queanbeyan)
9-13 Paterson Parade,
Queanbeyan, NSW 2620
Phone: (02) 6297 2177
Fax: (02) 6297 8882

QLD

MURARRIE

Unit 1/49 Miller Street,
Murarrie, QLD 4172
Phone: (07) 3890 2900
Fax: (07) 3890 5741

SA

POORAKA

9 Williams Circuit,
Pooraka, SA 5095
Phone: (08) 8368 3100
Fax: (08) 8260 4770

LONSDALE

85 O'Sullivan Beach Road,
Lonsdale, SA 5160
Phone: (08) 8186 2311
Fax: (08) 8186 2355

WA

BASSEDEAN

9 Dyer Road,
Bassendean, WA 6054
Phone: (08) 9279 7600
Fax: (08) 9279 7644

WANGARA

39 Prosperity Avenue,
Wangara, WA 6065
Phone: (08) 6305 0111
Fax: (08) 6305 0333

CONTENTS

▶ SAMS: SMART AIR MOVEMENT SYSTEM 4-5

▶ SECTION 1 | FLEXIBLE DUCTING

FLEXIBLE DUCTS

Test Certificates	6
Airflex Ultra R _m 1.0	7
Airflex Optimum R _m 1.5	7
Safe-T-Flex R0.6	8
Safe-T-Flex Ultra R _m 1.0	8
Safe-T-Flex Optimum R _m 1.5	8
Safe-T-Flex Elite R _m 2.0	8
Plainflex	9

▶ SECTION 2 | FITTINGS

FITTINGS

Multisnap Y – Insulated	10
Multisnap D – Insulated	11
Multisnap B – Insulated	12
Four Way Fitting	13
BTO Branches	14
DBTO Branches	14
Insulated DBTO Fittings	14
Y Branches	15
Metal Collar Y	15
Insulated Y Fittings	15
Multicut Ys	15
Multicut BTOs	16
Multicut DBTOs	16
Floor Boots	17
Reducers	17
Ezy Reducers	17

SECONDARY FITTINGS

Ezy Collar	18
Flex Collar and Flex Joiner	18
Joiners and Collars	18
Birdwire Adaptors	18
Bellmouth Spigots	19
Radial Dampers	19
Damper Blades	19
Butterfly Damper Kits	19
Inline Dampers	19
Return Air Plate	19
Plastic Return Air Boxes	20
Heavy Duty Floor Grilles	21
Return Air Boxes	21
Transitions	22
Drip Trays	22
P3 Poly Panel Supply and Return Air Plenums	23

▶ SECTION 3 | ZONING SOLUTIONS

Motorised Dampers – 24V Plastic Barrel	24
VAV 24V Plastic Barrel	24
Motorised Damper 24V – Metal Barrel	24
Motorised Dampers – 240V Plastic Barrel	25
Motorised Damper 240V – Metal Barrel	25
IAS Switchpoint, Single Point Zoning	26
IAS Multipoint Zoning	27
IAS MyZone VAV Zoning	28
IAS MyZone2 VAV Zoning	29
IAS Zone Star	30
IAS Zoning Accessories	30
IAS Smartzone Plus Zoning	31
ZoneBoss Zoning System	32
Evap Plenums and Plenum Plates	33
Commercial Plenums	33
Dropper Ducts	33
Flashing Kits	33
Superseal Dropper & Flashing	34-35
Multichute Evaporative Cooler Fitting	35

▶ SECTION 4 | AIR DIFFUSION PRODUCTS

SMART AIR ABS AIR DIFFUSION PRODUCTS

Classic Floor Registers	36
Metal Floor Registers	36
Linear Bar Floor Registers	36
Multijet Round Diffusers	37
Multicone Round Diffusers	37
Fullcone Round Diffusers	37
Builders Choice Round Diffusers	37
Slimline Return Air Grilles	38
Slimline Builders Model	38
Louvred Return Air Grilles	38
Multivents (MTV) – Grille Only	39
Multivents – Double Deflection	39
Multivent Eggcrate Grilles	39
Builders Choice Multi-directional diffusers	40
Plastic Cushion Boxes	40
Multivent Adaptors	41
Smart Diffusers	42
Multi-security Vents	42
Square Jet Diffusers	43
Multigrille Eggcrate Diffusers	43
Eggcrate Grilles	43
Gravity Louvre Grilles	43

PROFILER METAL AIR DIFFUSION PRODUCTS

Ceiling Diffusers – Aluminium	44
Swirl Diffusers	44
Linear Slot Boxes	45
Door Relief Grilles	45
Linear Bar Door Grilles	45
Weatherproof Louvres	45
Surface Mounted Jet Diffusers	45
Aluminium Eggcrate Grilles	46
Wall Registers	46

SECTION 5 | ACCESSORIES

ACCESSORIES

Tapes	47
Lintel Bars	47
Thermal Wire	47
Chipboard	47
Timber Supports	47
Slabs	47
Flue Accessories	47
Flashing Accessories	48
Evaporative Cooling Roof Flashings	48
Copper Accessories	48
Replacement Pumps	49
Replacement Parts for Evaps	49
Replacement Motors for Evaps	49
PVC Pipe	49
Vibration Mounts	50-51
Stick on Insulation Foil	52
Replacement Filters	52

SECTION 6 | REFRIGERATION

REFRIGERATION

Insulated Copper Pipe – 20m	53
Condenser Mounts	53
Quick Base	53
Refrigeration Capping (Metal)	53
QuikFit Wall Brackets	54
Rubber Condenser Mounts	54
Drain Hose	54
Condensate Pumps	54
Wall Hung Capping	55

SECTION 7 | FANS

FANS

Fan Boss Inline Fans	56
Metalflex Inline Fans	56
Blauberg Mixed Flow Inline Fans	56
Metal Roof Cowls	57
Smartvent Cowls and Fans	57
Fans Direct Inline	58

SECTION 8 | THERMOSTATS

THERMOSTATS

Universal Wall Hung Split Remote	59
Siemens	59
Honeywell	59-60

SECTION 9 | REPLACEMENT EVAP FILTERS

Celdek Pads	61-65
Aspen Filter Pads	65

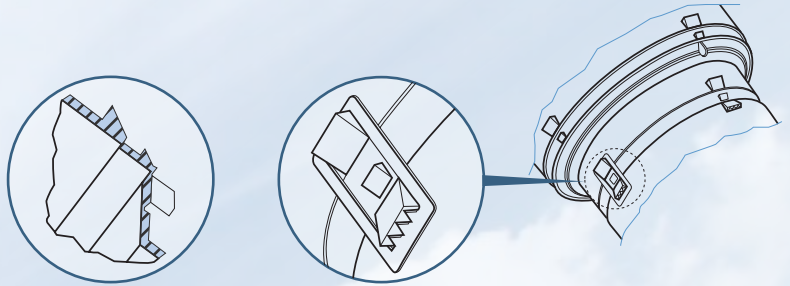
SECTION 10 | OTHER

Gas Ducted Order Sheet	66
Evap Order Sheet	67
Ducted Refrigerated Order Sheet	68
Wall Hung Order Sheet	69
Terms of Trade	70-71
Account Application Form	72-75
Available Brochures	76
Calendar	77

A REVOLUTION IN AIR CONDITIONING DESIGN

Introducing SAMS (*Smart Air Movement System*). SAMS will revolutionise the way that you will design and install air conditioning systems in the future. The key benefit of SAMS is that the fittings, reducers, collars, zone dampers and inline fans can be snapped together to form an Air Distribution Plenum.

SAMS™ unique snap-lock and clip fastening system ensures that fittings can easily be connected to each other without the use of flexible ductwork between the fittings. This saves both time and materials.



► Key elements of the SAMS System

multisnap® fittings

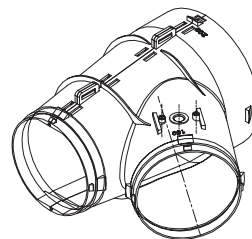
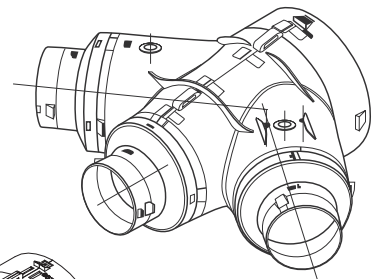
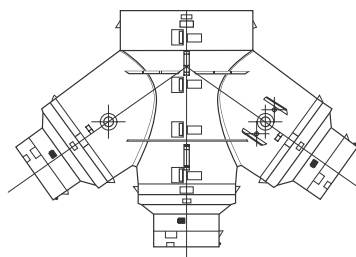
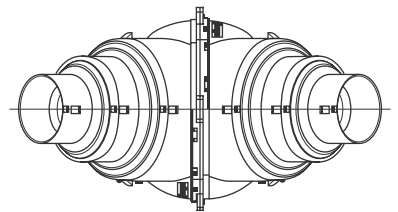
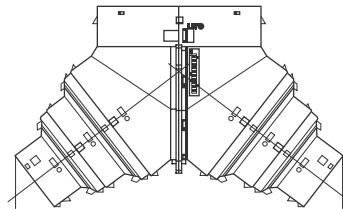
SAMS™ has three new fittings:

- Multisnap Y
- Multisnap D
- Multisnap B

The key benefits of the **NEW** Multisnap Y Multisnap D and Multisnap B fittings are:

- Multi function with multiple outlet sizes
- Revolutionary new two piece vertical snap fit design
- Two piece design can be packed in cartons for effective warehouse storage
- Available in plain and insulated
- Unique pin and clip insulation fastening system
- Closed cell polyethylene foam insulation material with consistent all round thickness
- Support hooks for easy hanging
- Super strong Injected molded plastic construction
- Can be snapped onto EZYReducer, EZYCollar, EzyZone Damper or Fan Boss Inline Fans
- Holding teeth enabling easier fitment of flexible duct core

Refer to pages 10, 11 and 12.



New reducers, EZY Collars, EZY Zone zone dampers and FanBoss in-line fans can then be connected to the Multisnap Y, Multisnap D and Multisnap B fittings.

PLEASE CONTACT YOUR SALES REPRESENTATIVE TO DISCUSS SAMS SYSTEM SIZING AND DESIGN.



EZYREDUCER

- Super strong Injected molded plastic construction
- Slimline design
- Available in six sizes
- Holding teeth enabling easier fitment of flexible duct core

Refer to page 17.



EZYCOLLAR

- Super strong Injected molded plastic construction
- Slimline design
- Available in six sizes
- Holding teeth enabling easier fitment of flexible duct core
- Can be mounted into 20mm P3 board or sheetmetal duct
- Can be used as a joiner, starting collar and bell mouth spigot (with damper)

Refer to page 18.



ZDITE BOSS

- Super strong ABS injected molded plastic construction
- Strengthening ribbing on inside damper body eliminates need for damper blade foam seal
- Available in 1Nm and 5Nm motor
- Available in 24V and 240V
- Support hooks for easy hanging
- Holding teeth enabling easier fitment of flexible duct core
- Specifically designed dampening blade manufactured from high grade premium polycarbonate.

Refer to page 24 and 25.



FAN BOSS

- Ideal for use where additional airflow in a system is required
- Super strong Injected molded plastic construction
- Revolutionary design that can be snapped onto Multisnap Y, Multisnap D, EzyReducer or EzyCollars
- Available in three sizes
- Support hooks for easy hanging
- Holding teeth enabling easier fitment of flexible duct core

Refer to page 56.

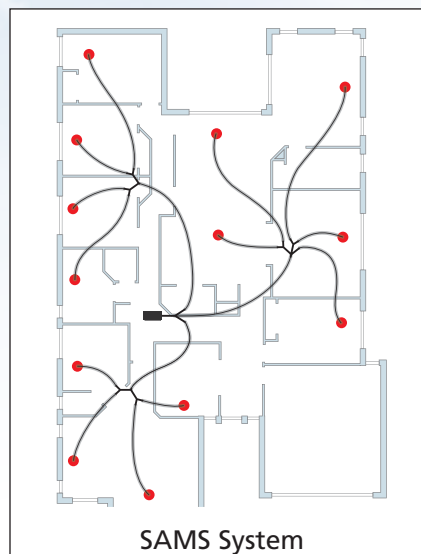
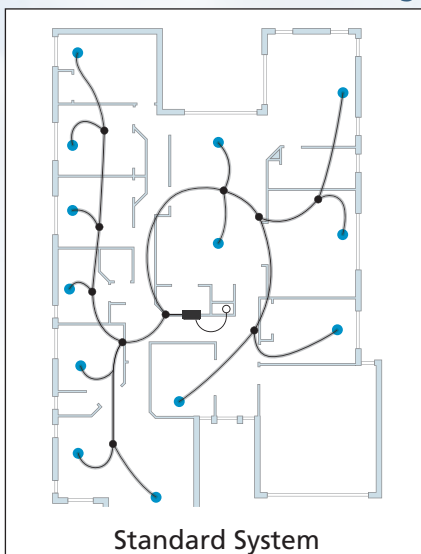
► Sams And System Design

The main difference between a **SAMS™** system and an existing system is the way the fittings of the **SAMS™** system connect to each other without the use of flexible duct to form a branch distribution plenum. Groups of fittings plenums are located within the design. This saves both time and money.

13 Outlet Ducted Gas Heating Installation with 150mm Outlets

Standard System Fittings

Y 141412 x 1
B 12108 x 1
B 10106 x 1
B 1086 x 2
D 121066 x 1
B 1088 x 1
B 866 x 4



SAMS™ System Fittings

Multisnap D 14121010 x 1
Multisnap D 12866 x 1
Multisnap Y 1088 x 2
Multisnap D 866 x 6

Test Certificate



Metalflex's Flexible duct has been tested and has passed* all requirements of AS 4254.1 and UL 181 for the use in domestic and commercial air handling systems.

PRODUCT NAMES & DESCRIPTION

PLAINFLEX®:	– Metallised plain core	AIRFLEX® ULTRA:	– Metallised core – R _m 1.0 – Fire retardant LD.PE polyethylene outer sleeve – Grey in colour
SAFE-T-FLEX®:	– Metallised core – R _m 0.6 – Metallised outer sleeve	SAFE-T-FLEX® ULTRA:	– Metallised core – R _m 1.0 – Metallised outer sleeve
SAFE-T-FLEX® OPTIMUM:	– Metallised core – R _m 1.5 – Metallised outer sleeve	AIRFLEX® OPTIMUM:	– Metallised core – R _m 1.5 – Fire retardant LD.PE polyethylene outer sleeve
SAFE-T-FLEX® ELITE:	– Metallised core – R _m 2.0 – Metallised outer sleeve		



METALFLEX ARE MEMBERS OF:

Australian Duct Manufacturers Alliance
The Master Plumbers and Mechanical Services Association of Australia

ADMA
AUSTRALIAN DUCT MANUFACTURERS ALLIANCE



TEST	DESCRIPTION OF TEST	RESULT
UL 181.11	Burn Test	Complies
UL 181.12	Temperature Test	Complies
UL 181.13	Puncture Test	Complies
UL 181.14	Static Load Test	Complies
UL 181.15	Impact Test	Complies
UL 181.17	Pressure Test	Complies
UL 181.18	Collapse Test	Complies
UL 181.19	Tension Test	Complies
UL 181	Mould Growth & Humidity Test	Complies

All tests in accordance with AS 4254.1 Tested by AW Textile Testing. Insulation tests conducted by Branz. Insulation code AS 4859.1 * Full set of test certificates are available on our website: www.metalflex.com.au

* Terms and Conditions apply. See product brochures for details.

AIRFLEX[®] ULTRA R_m 1.0



	100	150	200	250	300	350	400	450	500	550
CODE	AM64	AM66	AM68	AM610	AM612	AM614	AM616	AM618	AM620	AM322

6m

3m

Black inner core – metallised outer surface wrapped in a R_m 1.0 polyester blanket, sleeved with fire retardant LD PE polyethylene jacket.

- Meets requirements of BCA Code May 2013
- Operating temperature -20° to +80°
- Operating pressure -190pa to +1200pa
- Fire rated
- R_m 1.0 insulation material
- Meets insulation code AS 4859.1
- Complies with AS4254.1

AIRFLEX[®] OPTIMUM R_m 1.5



	100	150	200	250	300	350	400	450	500
CODE	AR64	AR66	AR68	AR610	AR612	AR614	AR616	AR618	AR620

6m

Black inner core – metallised outer surface wrapped in a R_m 1.5 polyester blanket, sleeved with fire retardant LD PE polyethylene jacket.

- Meets requirements of BCA Code May 2013
- Operating temperature -20° to +80°
- Operating pressure -190pa to +1200pa
- Fire rated
- R_m 1.5 insulation material
- Meets insulation code AS 4859.1
- Complies with AS4254.1

The above pictures do not represent the actual thickness of insulation.

METALLISED SLEEVE

Flexible Duct



SAFE-T-FLEX® R_m0.6

	100	150	200	250	300	350	400	450	500	550	600
CODE	SF64	SF66	SF68	SF610	SF612	SF614	SF616	SF618	SF620	SF322	SF324

6m

3m

Black inner core – metallised outer surface wrapped in a polyester blanket, sleeved in a multi layer metallised polyester film vapor barrier jacket

- Operating temperature -20° to +80°
- Operating pressure -190pa to +1200pa
- Fire rated
- R_m 0.6 thermal rated
- Meets insulation code AS 4859.1
- Complies with AS4254.1



SAFE-T-FLEX® ULTRA R_m1.0 (3 metre – Made to Order – SA Only)

	100	150	200	250	300	350	400	450	500	550
CODE	SM64	SM66	SM68	SM610	SM612	SM614	SM616	SM618	SM620	

6m

CODE		SM36	SM38	SM310	SM312	SM314	SM316	SM318	SM320	SM322
-------------	--	------	------	-------	-------	-------	-------	-------	-------	-------

3m

Black inner core – metallised outer surface wrapped in a R_m 1.0 polyester blanket, sleeved in a multi layer metallised polyester film vapor barrier jacket

- Meets requirements of BCA Code May 2013
- Operating temperature -20° to +80°
- Operating pressure -190pa to +1200pa
- Fire rated AS4254-2002
- R_m 1.0 insulation material
- Meets insulation code AS 4859.1
- Complies with AS4254.1



SAFE-T-FLEX® OPTIMUM R_m1.5

	100	150	200	250	300	350	400	450	500
CODE	SR64	SR66	SR68	SR610	SR612	SR614	SR616	SR618	SR620

6m

Black inner core – metallised outer surface wrapped in a R_m 1.5 polyester blanket, sleeved in a multi layer metallised polyester film vapor barrier jacket

- Meets requirements of BCA Code May 2013
- Operating temperature -20° to +80°
- Operating pressure -190pa to +1200pa
- Fire rated AS4254-2002
- R_m 1.5 insulation material
- Meets insulation code AS 4859.1
- Complies with AS4254.1



SAFE-T-FLEX® ELITE R_m2.0 (3 metre – Made to Order)

	150	200	250	300	350	400	450	500
CODE	S036	S038	S0310	S0312	S0314	S0316	S0318	S0320

3m

Black inner core – metallised outer surface wrapped in a R_m 2.0 polyester blanket, sleeved in a multi layer metallised polyester film vapour barrier jacket

- Available in 3m lengths only
- Meets requirements of BCA Code
- Operating temperature -20° to + 80°
- Operating pressure -190pa to +1200pa
- Fire rated AS4254-2002
- R_m 2.0 insulation material
- Meets insulation code AS 4859.1
- Complies with AS4254.1

The above pictures do not represent the actual thickness of insulation.

Flexible Duct

PLAINFLEX®



	100	125	150	200	250	300	350	400	450	500	550	600
CODE	PF64	PF65	PF66	PF68	PF610	PF612	PF614	PF616	PF618	PF620	PF322	PF324
6m												
3m												

Plain duct. Black inner core – metallised outer surface.

- Operating temperature: -20° to +80°
- Operating pressure: -190pa to +1200pa
- General Use: Exhaust and ventilation systems

METALFLEX® FLEXIBLE DUCTING SELECTION CHART

Please check legislative requirements in your area before ordering.

SIZE	PLAINFLEX®	AIRFLEX®		SAFE-T-FLEX®				
		R _m 1.0	R _m 1.5	R0.6	R1.0 ^{RT}	R _m 1.0	R _m 1.5	R _m 2.0
100	■	■	■	■	■	■	■	
125	■							
150	■	■	■	■	■	■	■	■
200	■	■	■	■	■	■	■	■
250	■	■	■	■	■	■	■	■
300	■	■	■	■	■	■	■	■
350	■	■	■	■	■	■	■	■
400	■	■	■	■	■	■	■	■
450	■	■	■	■	■	■	■	■
500	■	■	■	■	■	■	■	■
550	■	■		■	■	■		■
600	■			■				
GAS HEATING		■	■		■	■	■	
EVAPORATIVE COOLING		■		■	■	■		
REFRIGERATED A/C		■	■		■	■	■	
COMMERCIAL SYSTEMS		■	■		■	■	■	
VENTILATION	■							
DUCT LENGTH								
6 Metre	■	■	■	■	■	■	■	■
3 Metre						■ (SA Only)		■

Y Fittings



- Multi-function fitting with multiple outlet sizes
- Revolutionary new two piece vertical snap fit design
- Two piece design can be packed in cartons for effective warehouse storage
- Available in plain and insulated
- Available in eight sizes (150mm to 500mm)
- Closed cell polyethylene foam insulation material with consistent thickness
- Support hooks for easy hanging
- Super strong injected moulded plastic construction
- Multisnap Y's, D's and B's can be snapped together to form a distribution plenum
- Can be snapped onto EZYReducer, Ezy Collar, Zone Boss Damper or Fan Boss Inline Fans
- Holding teeth enabling easier fitment of flexible duct core
- Unique pin and clip product and insulation fastening system



multisnap® Y

CODE	SIZE
MSY15I	150.100.100
MSY20I	200. 150/100 150/100
MSY25I	250. 200/150/100 200/150/100
MSY30I	300. 250/200/150 250/200/150
MSY35I	350. 300/250/200 300/250/200
MSY40I	400. 350/300/250 350/300/250
MSY45I	450. 400/350/300 400/350/300
MSY50I	500. 450/400/350 450/400/350

SIZE CHART PRE-CUT multisnap® Y

CODE	SIZE
MSY201515I	200. 150. 150
MSY251515I	250. 150. 150
MSY252020I	250. 200. 200
MSY302020I	300. 200. 200
MSY302525I	300. 250. 250
MSY352525I	350. 250. 250
MSY353025I	350. 300. 250
MSY353030I	350. 300. 300
MSY403030I	400. 300. 300
MSY403535I	400. 350. 350
MSY403530I	400. 350. 300
MSY453530I	450. 350. 300
MSY453535I	450. 350. 350
MSY454030I	450. 400. 300
MSY454035I	450. 400. 350
MSY454040I	450. 400. 400

- Multi-function double branch fitting with multiple outlet sizes
- Revolutionary two piece snap fit design
- Two piece design can be packed in cartons for effective warehouse storage
- Available in insulated
- Available in five sizes (200mm to 400mm)
- Closed cell polyethylene foam insulation material with consistent thickness
- Support hooks for easy hanging
- Super strong injected moulded plastic construction
- Multisnap Y's, D's and B's can be snapped together to form a air distribution plenum
- Can be snapped onto EZYReducer, Ezy Collar, Zone Boss Damper or Fan Boss Inline Fans
- Holding teeth enabling easier fitment of flexible duct core
- Unique pin and clip product and insulation fastening system



REDUCERS FOR multisnap® D

CODE	SIZE(mm)
MSD20i	200. 150. 150. 150
MSD25i	250. 200. 200. 200
MSD30i	300. 250. 250. 250
MSD35i	350. 300. 300. 300
MSD40i	400. 350. 350. 350

CODE	SIZE(mm)
DYR1510	150 to 100
DYR2015	200 to 150
DYR252015	250 to 200 to 150
DYR2520	250 to 200
DYR302520	300 to 250 to 200
DYR3025	300 to 250
DYR353025	350 to 300 to 250
DYR3530	350 to 300

PRECUT multisnap® D

CODE	SIZE(mm)
MSD25151515i	250. 150. 150. 150
MSD25201515i	250. 200. 150. 150
MSD25202015i	250. 200. 200. 150
MSD30202020i	300. 200. 200. 200
MSD30252020i	300. 250. 200. 200
MSD35252525i	350. 250. 250. 250
MSD35302020i	350. 300. 200. 200
MSD35302525i	350. 300. 250. 250
MSD40303030i	400. 300. 300. 300

BTO Fittings



- Multi function SINGLE branch fitting with multiple outlet sizes
- Revolutionary two piece snap fit design
- Two piece design can be packed in cartons for effective warehouse storage
- Available in insulated
- Available in five sizes (200mm to 450mm)
- Closed cell polyethylene foam insulation material with consistent thickness
- Support hooks for easy hanging
- Super strong injected moulded plastic construction
- Multisnap Y's, D's and B's can be snapped together to form a air distribution plenum
- Can be snapped onto EZYReducer, Ezy Collar, Zone Boss Damper or Fan Boss Inline Fans
- Holding teeth enabling easier fitment of flexible duct core
- Unique pin and clip product and insulation fastening system



CODE	SIZE(mm)
MSB20i	200. 150. 150
MSB25i	250. 200. 200
MSB30i	300. 250. 250
MSB35i	350. 300. 300
MSB40i	400. 350. 350

REDUCERS FOR **multisnap**® B

CODE	SIZE(mm)
DYR1510	150 to 100
DYR2015	200 to 150
DYR252015	250 to 200 to 150
DYR2520	250 to 200
DYR302520	300 to 250 to 200
DYR3025	300 to 250
DYR353025	350 to 300 to 250
DYR3530	350 to 300

PRE-CUT **multisnap**® B

CODE	SIZE(mm)
MSB252015i	250. 200. 150
MSB251515i	250. 150. 150
MSB302520i	300. 250. 200
MSB302020i	300. 200. 200
MSB353025i	350. 300. 250
MSB352525i	350. 250. 250
MSB403030i	400. 300. 300
MSB403530i	400. 350. 300

- Multi function FOUR WAY branch fitting with multiple outlet sizes
- Available with 4 x manual or 4 x motorised 24V damper blade control
- Insulated with PolyLite foil insulation
- Standard fitting inlet 400mm, outlets 4 x 300mm
- Air inlet can be increased to 450mm with EYR4540 reducer
- Air outlets can be reduced to 250mm or 200mm with DYR reducer
- Support hooks for each hanging
- Super strong injection moulded plastic construction
- Can be snapped together with Multisnap Y's, Ds and Bs to form an air distribution plenum
- Can be snapper onto EZY reducer, EZY Collar, Zone Boss Damper or Fan Boss In Line Fans
- Holding teeth enabling easier fitment of flexible duct core
- Unique pins and clip fastening system



CODE	DESCRIPTION	SIZE (mm)
MS4WAYINS	Multisnap 4 Way Fitting 4 x Manual Dampers	400.300.300.300.300
MS4WAYEZVINS	Multisnap 4 Way Fitting 4 x 24V Motorised Dampers	400.300.300.300.300

REDUCERS FOR 4 WAY FITTINGS

CODE	SIZE (mm)
DYR302520	300 to 250 to 200
DYR302520	300 to 250

B.T.O. Branches



CODE	SIZE
B666	150. 150. 150
B886	200. 200. 150
B888	200. 200. 200
B10106	250. 250. 150
B10108	250. 250. 200

Code followed by 'i' for insulated fittings.

D.B.T.O. Branches



CODE	SIZE
D8866	200. 200. 150. 150
D101066	250. 250. 150. 150
D101086	250. 250. 200. 150
D101088	250. 250. 200. 200

Code followed by 'i' for insulated fittings.

INSULATED DBTO FITTINGS *(Queensland Only)*

CODE	SIZE
L-YD-16141010	400 – 350 – 250 – 250 insulated DBTO
L-YD-16141212	400 – 350 – 300 – 300 insulated DBTO
L-YD-18161210	450 – 400 – 300 – 250 insulated cutdown
L-YD-18161212	450 – 400 – 300 – 300 insulated cutdown
L-YD-18161410	450 – 400 – 350 – 250 insulated cutdown
L-YD-18161412	450 – 400 – 350 – 300 insulated cutdown
L-YD-18161414	450 – 400 – 350 – 350 insulated cutdown

Y Branches



CODE	SIZE
Y666	150. 150. 150
Y121210	300. 300. 250
Y121212	300. 300. 300
Y141410	350. 350. 250
Y141412	350. 350. 300
Y141414	350. 350. 350
Y161612	400. 400. 300
Y161614	400. 400. 350
Y161616	400. 400. 400

Code followed by 'i' for insulated fittings



multicut® Y

CODE	COMBINATIONS
Y22	500. 450. 400
	500. 450. 450
	500. 500. 400
	500. 500. 450
	500. 500. 500
	550. 450. 400
	550. 450. 450
	550. 500. 400
	550. 500. 450
	550. 500. 500

Code followed by 'i' for insulated fittings

INSULATED Y FITTINGS *(Queensland Only)*

CODE	SIZE
L-Y-201414	500 – 350 – 350 insulated Y fitting
L-Y-201612	500 – 400 – 300 insulated Y fitting
L-Y-201616	500 – 400 – 400 insulated Y fitting
L-Y-201818	500 – 450 – 450 insulated Y fitting

multicut[®]

Fittings



CODE	COMBINATIONS
B1	450.300.200
	450.300.250
	450.350.200
	450.350.250
	450.400.200
	450.400.250
B2	450.300.300
	450.350.300
	450.350.350
	450.400.300
	450.400.350
	450.400.350



CODE	COMBINATIONS	
DB1	450.300.200.200	
	450.300.250.200	
	450.300.250.250	
	450.350.200.200	
	450.350.250.200	
	450.350.250.250	
	450.400.200.200	
	450.400.250.200	
	450.400.250.250	
DB2	450.300.300.200	
	450.300.300.250	
	450.350.300.200	
	450.350.300.250	
	450.350.350.200	
	450.350.350.250	
	450.400.300.200	
	450.400.300.250	
	450.400.350.200	
	450.400.350.250	
	DB3	450.300.300.300
		450.350.300.300
450.350.350.300		
450.350.350.350		
450.400.300.300		
450.400.350.300		
450.400.350.350		

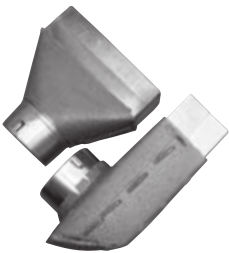
smartboot PLASTIC BOOTS



CODE	SIZE
300 x 100 – 150° Straight	SB3010 15
300 x 100 – 200° Straight	SB3010 20
350 x 150 – 200° Straight	SB3515 20
350 x 150 – 250° Straight	SB3515 25
300 x 100 – 150° Angled	AB3010 15
300 x 100 – 200° Angled	AB3010 20
350 x 150 – 200° Angled	AB3515 20
350 x 150 – 250° Angled	AB3515 25

- All boots fitted with twin butterfly dampers
- Smart boots fit down register holes

METAL BOOTS *(Insulated)*



CODE	SIZE
300 x 100 – 150° Side	MS301015
300 x 100 – 200° Side	MS301020
350 x 150 – 200° Side	MS351520
350 x 150 – 250° Side	MS351525
400 x 100 – 200° Side	MS401020
300 x 100 – 150° End	ME301015
300 x 100 – 200° End	ME301020
350 x 150 – 200° End	ME351520
350 x 150 – 250° End	ME351525
400 x 100 – 200° End	ME401020
300 x 100 – 150° Uni	MU301015
300 x 100 – 200° Uni	MU301020
350 x 150 – 200° Uni	MU351520
350 x 150 – 250° Uni	MU351525

EZYREDUCER



CODE	SIZE
EYR2015	200 to 150
EYR2520	250 to 200
EYR3025	300 to 250
EYR3530	350 to 300
EYR4035	400 to 350
EYR4540	450 to 400

Code followed by 'I' for Insulated

- Revolutionary design that can be snapped onto Multisnap Y, Multisnap D and Multisnap B Zone Boss Damper or Fan Boss inline fans
- Super strong injected molded plastic construction
- Slimline design
- Available in six sizes
- Holding teeth enabling easier fitment of flexible duct core

PLASTIC REDUCERS



SIZE & CODE
R2015
R2520
R3025
R3530
R4035
R4540
R5045

PLASTIC REDUCERS INSULATED



SIZE & CODE
R2015i
R2520i
R3025i
R3530i
R4035i
R4540i
R5045i

JOINERS & Collars

EZYCOLLAR

- Revolutionary design that can be snapped onto Multisnap Y, Multisnap D, Multisnap B, Zone Boss Damper or Fan Boss inline fans
- Super strong injected molded plastic construction
- Snap locks directly onto metal sheet
- Available in nine sizes
- Holding teeth enabling easier fitment of flexible duct core



WITH DAMPER



CODE	SIZE (mm)
EYC100	100
EYC150	150
EYC200	200
EYC250	250
EYC300	300
EYC350	350
EYC400	400
EYC450	450
EYC500	500

CODE	SIZE (mm)
EYD100	100
EYD150	150
EYD200	200
EYD250	250
EYD300	300
EYD350	350
EYD400	400

FITTING COLLAR & FITTING JOINER



Flex Collar



Flex Joiner

FITTING COLLAR

CODE	SIZE (mm)
FC100	100
FC150	150
FC200	200
FC250	250
FC300	300
FC350	350
FC400	400
FC450	450
FC500	500

FITTING JOINER

CODE	SIZE (mm)
FJ100	100
FJ150	150
FJ200	200
FJ250	250
FJ300	300
FJ350	350
FJ400	400
FJ450	450
FJ500	500

- Fit flexible duct to the flex collar then snap onto Multisnap fitting. Easy!
- Super strong injected molded plastic construction
- Available in nine sizes

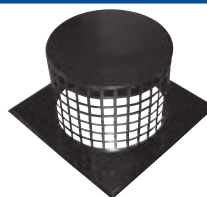
- Connects two peices of flexible duct together
- Super strong injected molded plastic construction
- Available in nine sizes



Joiner



Collar



Birdwire Adaptor



Inline Flex Balancing Damper

JOINER

SIZE & CODE
JM150
JM200
JM250
JM300
JM350
JM400
JM450
JM500
JM550
JM600

COLLARS

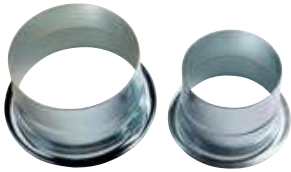
SIZE & CODE
SC150
SC200
SC250
SC300
SC350
SC400
SC450
SC500
SC550
SC600

BIRDWIRE ADAPTORS

SIZE & CODE
BW300
BW350
BW400

INLINE WITH DAMPER

SIZE & CODE
DBF150
DBF200
DBF250
DBF300
DBF350
DBF400



Bellmouth spigots plain

BELLMOUTH™ PLAIN

SIZE & CODE
BM150 •
BM200 •
BM250 •
BM300 •

SIZE & CODE
BM350*
BM400*

• Packed in 20 per box * Packed in 10 per box



Bellmouth spigots with balancing damper

BELLMOUTH™ WITH DAMPER

SIZE & CODE
BMC150 •
BMC200 •
BMC250 •
BMC300 •

SIZE & CODE
BMC350*
BMC400*

• Packed in 20 per box * Packed in 10 per box



Radial balancing damper

RADIAL DAMPERS

SIZE & CODE
RD150
RD200
RD250

SIZE & CODE
RD300
RD350



Branch take off damper blade

DAMPER BLADES

SIZE & CODE
DB150
DB200
DB250
DB300

SIZE & CODE
DB350
DB400
DB450
DB500



Inline Flex Backdraft Damper

BACK DRAFT INLINE DAMPER

SIZE & CODE
NRD100
NRD150
NRD200
NRD250
NRD300



RETURN AIR PLATE

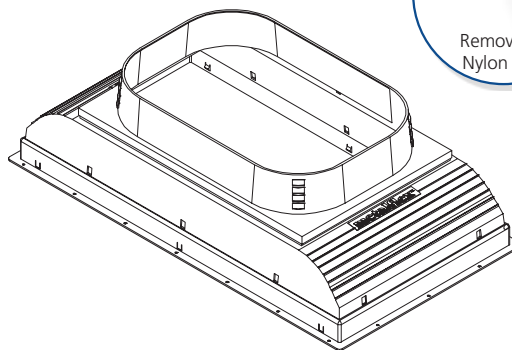
SIZE & CODE
RP300
RP350
RP400
RP450
RP500

PLASTIC RETURN Air Boxes



RETURN AIR BOX

- Available in two sizes to suit 380mm x 510mm and 400mm x 750mm Slimline Smartgrilles
- Revolutionary design with multiple snap on adaptor outlet sizes
- Low profile
- Lightweight
- Super strong Injected molded plastic construction
- Ezy Fit removable nylon clips
- No holes required to be cut out
- No sharp edges
- Simple and easy to install



PB3851 & MA3530

CODE	SIZE(mm)
PB3851	Return Air Box to suit SGP/SGF3851

ADAPTORS *(Must be ordered with Return Air Box)*

CODE	SIZE(mm)
MA3530	350 x 350 to 300
MA3535	350 x 350 to 350



PB7540 & MA5235

CODE	SIZE(mm)
PB7540	Return Air Box to suit SGP/SGF4075

ADAPTORS *(Must be ordered with Return Air Box)*

CODE	SIZE(mm)
MA5235	520 x 520 to 350
MA5240	520 x 520 to 400
MA5245	520 x 520 to 450
MA5250	520 x 520 to 500

METAL BOXES & Floor Grilles



Heavy duty bar floor grille

FLOOR GRILLES *(Heavy Duty)*

SIZE	CODE
450 x 350	FGF4535
450 x 300	FGF4530
600 x 300	FGF6030
900 x 400	FGF9040

- Designed to suit floor installation
- Design 2000 filter (standard)
- Powder coated gloss beige finish
- 6 sizes to choose from
- Slimline bevelled profile frame
- Complete aluminium construction
- Code FGF, followed by size

PLAIN METAL BOXES

CODE	CODE
PB4530	PB6030
PB4535	PB9040

CUSHION BOXES INSULATED METAL

CODE
CBS4520*
CBS4525*
CBS4530*
CBS4535*
CBS4540*



5mm Foil insulated return air box

RETURN AIR BOXES 5mm FOIL INSULATED

Boxes can be supplied both assembled or in kit form. * Suits T/Bar return air grilles

SIZE	CODE	SIZE	CODE
400 x 400	RB4040	800 x 300	RB8030
450 x 450	RB4545	900 x 400	RB9040
500 x 500	RB5050	900 x 500	RB9050
500 x 400	RB5040	1000 x 400	RB10040
600 x 300	RB6030	1200 x 400	RB12040
600 x 400	RB6040	550 x 550*	RB5555
750 x 350	RB7535	1150 x 550*	RB11555
750 x 400	RB7540	1500 x 400	RB15040
750 x 550	RB7555		

RETURN AIR BOXES DUCTLITE 20mm INSULATION *(South Australia Only)*

SIZE	CODE
700 x 500	RBL7050
750 x 450	RBL7545
800 x 500	RBL8050
900 x 500	RBL9050
550 x 550	RBL5555
1150 x 550	RBL11555

TRANSITIONS

TRANSITIONS WITH NO POPS CUT OUT



TRANSITIONS – 5mm FOIL / SILVER

CODE	DESCRIPTION	FLOW
VSABOXS	V BOX SMALL – Perimeter up to 2300mm	S/AIR
VSABOXM	V BOX MEDIUM – Perimeter 2301mm to 2820mm	S/AIR
VSABOXL	V BOX LARGE – Perimeter 2821mm to 3500mm	S/AIR
RABOXXS	RETURN AIR BOX SMALL – Perimeter up to 2300mm	R/AIR
RABOXM	RETURN AIR BOX MEDIUM – Perimeter 2301mm to 2820mm	R/AIR
RABOXL	RETURN AIR BOX LARGE – Perimeter 2821mm to 3500mm	R/AIR

TRANSITIONS WITH POPS CUT OUT AND SPIGOTS FITTED

SUPPLY AIR ONLY



◀ S.O.S.

SINGLE SPIGOT

SIZE	CODE
350 DIA	SOS35
400 DIA	SOS40
450 DIA	SOS45
500 DIA	SOS50
550 DIA	SOS55
600 DIA	SOS60



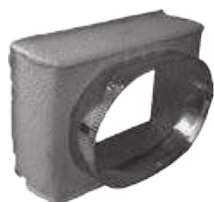
◀ S.O.T.

TWIN SPIGOT

SIZE	CODE
350 - XXX	SOT35
400 - XXX	SOT40
450 - XXX	SOT45
500 - XXX	SOT50
550 - XXX	SOT55
600 - XXX	SOT60

Insulation shown may vary in different states.

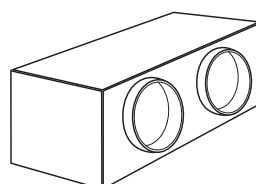
RETURN AIR ONLY



◀ R.O.S.

SINGLE SPIGOT

SIZE	CODE
350 DIA	ROS35
400 DIA	ROS40
450 DIA	ROS45
500 DIA	ROS50
550 DIA	ROS55
600 DIA	ROS60



◀ R.O.T.

TWIN SPIGOT

SIZE	CODE
350 - 350	ROT35
400 - 400	ROT40
450 - 450	ROT45
500 - 500	ROT50
550 - 550	ROT55
600 - 600	ROT60

Insulation shown may vary in different states.



Drip Tray with 20mm PVC drain

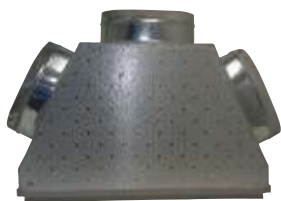
DRIP TRAYS – PRESSED

SIZE	CODE	SIZE	CODE
800 x 800	DTP88	1700 x 800	DTP178
1100 x 800	DTP118	1400 x 1100	DTP1411
1100 x 900	DTP119	1500 x 900	DTP159
1400 x 800	DTP148	1700 x 1100	DTP1711

SUPPLY & RETURN AIR

Plenums, Grille Cappers & Spigots

20mm P3 POLY PANEL



V-Box with Spigots

SUPPLY & RETURN PLENUMS

CODE	DESCRIPTION
SUPPLY AIR PLENUMS	
MPG600	Plenum 2.50 circ. 600 deep
MPH600	Plenum 2.75 circ. 600 deep
MPI600	Plenum 3.00 circ. 600 deep
MPJ600	Plenum 3.25 circ. 600 deep
MPK600	Plenum 3.50 circ. 600 deep
RETURN AIR PLENUMS	
MPG200	Plenum 2.50 circ. 200 deep
MPH200	Plenum 2.75 circ. 200 deep
MPI200	Plenum 3.00 circ. 200 deep
MPJ200	Plenum 3.25 circ. 200 deep
MPK200	Plenum 3.50 circ. 200 deep

GRILLE CAPPERS

CODE	DESCRIPTION
MCAP4040	405 x 405 w/-1 x 350 grille cap
MCAP5050	505 x 505 w/-1 x 400 grille cap
MCAP5555	555 x 555 w/-1 x 450 grille cap
MCAP6040	605 x 405 w/-1 x 400 grille cap
MCAP7555	755 x 555 w/-1 x 450 grille cap
MCAP8050	805 x 505 w/-2 x 400 grille cap
MCAP9050	905 x 505 w/-2 x 400 grille cap
MCAP9055	905 x 555 w/-2 x 400 grille cap
MCAP1155	1155 x 555 w/-2 x 450 grille cap

CUT IN SPIGOTS

CODE	DESCRIPTION
MSCUT150	150D Spigot fitted to box
MSCUT200	200D Spigot fitted to box
MSCUT250	250D Spigot fitted to box
MSCUT300	300D Spigot fitted to box
MSCUT350	350D Spigot fitted to box
MSCUT400	400D Spigot fitted to box
MSCUT450	450D Spigot fitted to box
MSCUT500	500D Spigot fitted to box
MSCUT550	550D Spigot fitted to box

MOTOR DAMPERS

24 Volt



Metalflex (3Nm) Motor

- Variable Air Velocity motor allowing damper blade pitch to be set with compatible VAV zoning control system
- Damper position indicator
- Forms part of S.A.M.S Smart Air Movement System
- Revolutionary design that can be

MOTOR DAMPERS – VAV 24V Metalflex (3Nm) Motor

CODE	SIZE	DESCRIPTION
EZV150L	150mm	24 Volt VAV Motorised Damper
EZV200L	200mm	" "
EZV250L	250mm	" "
EZV300L	300mm	" "
EZV350L	350mm	" "
EZV400L	400mm	" "

- snapped onto Multisnap Y, Multisnap D Multisnap B, EzyReducer or EzyCollar
- Super strong Injected moulded plastic construction
- Internal body ribbing eliminates need for damper blade foam seal
- Support hooks for easy hanging
- Holding teeth enabling easier fitment of flexible duct core
- Closed cell polyethylene foam insulation material with consistent all round thickness
- Available in six sizes
- 5 year replacement warranty



Belimo (5Nm) Motor

- Forms part of S.A.M.S. Smart Air Movement System
- Revolutionary design that can be snapped onto Multisnap Y, Multisnap D, Multisnap B, EZYReducer or EZYCollars
- Super strong injected molded plastic construction

MOTOR DAMPERS – 24V Belimo (5Nm) Motor

CODE	SIZE	DESCRIPTION
EZB150L	150mm	24 Volt Motrised Damper
EZB200L	200mm	" "
EZB250L	250mm	" "
EZB300L	300mm	" "
EZB350L	350mm	" "
EZB400L	400mm	" "

- Internal body ribbing eliminates need for damper blade foam seal
- Support hooks for easy hanging
- Holding teeth enabling easier fitment of flexible duct core
- Closed cell polyethylene foam insulation material with consistent all round thickness
- Supplied with a 1m 24V cable
- Available in six sizes
- 5 year replacement warranty

Metal Motor Damper



- 5Nm Belimo Motor
- 5mm foil backed insulation
- 24 Volt 5Nm Damper Motor
- 5 year replacement warranty
- Supplied with a 1m 24V cable

MOTOR DAMPERS – 24V Belimo (5Nm) Motor

CODE	SIZE	DESCRIPTION
MDB150L	150 Ø	5Nm 24 Volt motorised damper
MDB200L	200 Ø	" "
MDB250L	250 Ø	" "
MDB300L	300 Ø	" "
MDB350L	350 Ø	" "
MDB400L	400 Ø	" "
MDB450L	450 Ø	" "
MDB500L	500 Ø	" "

MOTOR DAMPERS

240 Volt



Metalflex (1Nm) Motor

- Forms part of S.A.M.S. Smart Air Movement System
- Revolutionary design that can be snapped onto Multisnap Y, Multisnap D, Multisnap B, EZYReducer or EZYCollars
- Super strong injected molded plastic construction

MOTOR DAMPERS – 240V Metalflex (1Nm) Motor

CODE	SIZE	DESCRIPTION
EZ150M	150mm	240 Volt Motorised Damper
EZ200M	200mm	" "
EZ250M	250mm	" "
EZ300M	300mm	" "
EZ350M	350mm	" "
EZ400M	450mm	" "

- Internal body ribbing eliminates need for damper blade foam seal
- Support hooks for easy hanging
- Holding teeth enabling easier fitment of flexible duct core
- Closed cell polyethylene foam insulation material with consistent all round thickness
- Supplied with a 1m 240V cable
- Available in six sizes
- 5 year replacement warranty



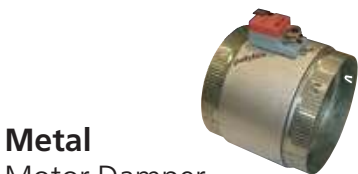
Belimo (5Nm) Motor

- Forms part of S.A.M.S. Smart Air Movement System
- Revolutionary design that can be snapped onto Multisnap Y, Multisnap D, Multisnap B, EZYReducer or EZYCollars
- Super strong injected molded plastic construction

MOTOR DAMPERS – 240V Belimo (5Nm) Motor

CODE	SIZE	DESCRIPTION
EZB150M	150mm	240 Volt Motorised Damper
EZB200M	200mm	" "
EZB250M	250mm	" "
EZB300M	300mm	" "
EZB350M	350mm	" "
EZB400M	400mm	" "

- Internal body ribbing eliminates need for damper blade foam seal
- Support hooks for easy hanging
- Holding teeth enabling easier fitment of flexible duct core
- Closed cell polyethylene foam insulation material with consistent all round thickness
- Supplied with a 1m 240V cable
- Available in six sizes
- 5 year replacement warranty



Metal Motor Damper

- 5Nm Belimo Motor
- 5mm foil backed insulation
- 240 Volt 5Nm Damper Motor
- 5 year replacement warranty

MOTOR DAMPERS – 240V Belimo (5Nm) Motor

CODE	SIZE	DESCRIPTION
MDB150M	150 Ø	5Nm 240 Volt motorised damper
MDB200M	200 Ø	" "
MDB250M	250 Ø	" "
MDB300M	300 Ø	" "
MDB350M	350 Ø	" "
MDB400M	400 Ø	" "
MDB450M	450 Ø	" "
MDB500M	500 Ø	" "

SWITCHPOINT 4 ZONE

Features

- 24 Volt A/C Power Supply – Offers substantial savings in installation costs compared to 240V systems
- Zone dampers wired direct to wall switch (*No control box*)
- Low cost
- Easy to use On/Off slide switches
- Full open/ full closed zone damper operation
- Individual zone labelling

CODE	DESCRIPTION
SWP4KIT	Switchpoint 4 Zone Kit with Transformer



SINGLEPOINT 1 ZONE

Features

- 24 Volt A/C Power Supply – Offers substantial savings in installation costs compared to 240V systems
- Zone dampers wired direct to wall switch (*No control box*)
- Low cost
- Two zone ports – can be operated as a single on/off zone OR dual zone Day/Night zoning
- One touch illuminated LED control panel
- Full open / full closed zone damper operation

CODE	DESCRIPTION
SNP1KIT	Singlepoint 2, 3 or 4 Zone Kit with Transformer



SINGLEPOINT 2, 3 OR 4 ZONE

Features

- 24 Volt A/C Power Supply – Offers substantial savings in installation costs compared to 240V systems
- Zone dampers wired direct to wall switch (*No control box*)
- Low cost
- 2,3 or 4 zone option with three separate zone control overlays supplied
- One touch illuminated LED control panel
- Full open/ full closed zone damper operation
- Individual zone labelling
- Selectable Spill Air Safety System (SASS)

CODE	DESCRIPTION
SNP234KIT	Singlepoint 2, 3 or 4 Zone Kit with Transformer



MULTIPOINT ZONING SYSTEM

Features

- 24 Volt A/C Power Supply – Offers substantial savings in installation costs compared to 240V systems
- Zone dampers wired direct to control box
- Choice of three wall switches with 2,3,4 or 5.6 or 7,8 zones
- Choice of two control boxes that control up to 6 or up to 8 zones
- One touch illuminated LED control panel
- Full open/ full closed zone damper operation
- Individual zone labelling
- Selectable Spill Air Safety System (SASS)
- Multiple wall control option with on/off zone control (*Additional*)

CODE	DESCRIPTION
MPWS234	Multipoint 2, 3 or 4 zone touch pad
MPWS56	Multipoint 5 or 6 zone touch pad
MPWS78	Multipoint 7 or 8 zone touch pad
MPCBT6	Multipoint 6 Zone Control Box with Transformer
MPCBT8	Multipoint 8 Zone Control Box with Transformer



MULTIPOINT KIT PRICING

ZONES	TOUCH PAD	CONTROL BOX WITH TRANSFORMER	20m RED SHIELDED CABLE
2	MPWS234	MPCBT6	CAB20IAS
3	MPWS234	MPCBT6	CAB20IAS
4	MPWS234	MPCBT6	CAB20IAS
5	MPWS56	MPCBT6	CAB20IAS
6	MPWS56	MPCBT6	CAB20IAS
7	MPWS78	MPCBT8	CAB20IAS
8	MPWS78	MPCBT8	CAB20IAS

MULTIPOINT ADDITIONAL WALL CONTROL OPTION

Features

- Additional wall controls can be installed to control each zone in multiple rooms
- Zone control is on/off
- Touch pad expansion module is required if more than one additional wall control is installed
- One touch illuminated LED control panel

CODE	DESCRIPTION
D-MP-T1	Multipoint Single Button Touch Pad
D-TPAD-EXP	Touch Pad Expansion Module



MY ZONE VAV ZONING SYSTEM

Features

MY ZONE 6

- 24 Volt A/C Power Supply – Offers substantial savings in installation costs compared to 240V systems
- VAV zone damper blade control set from the touch screen
- Stylish colour touch pad screen with ability to set 1 to 6 zones
- Easy set on/off zone selection
- Electronic zone labelling
- Selectable Spill Air Safety System (SASS)

MY ZONE 8

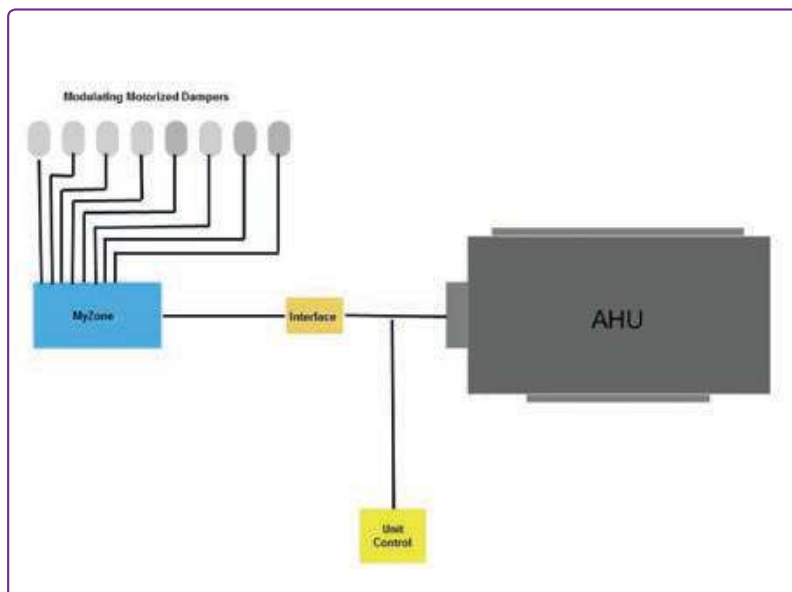
- 24 Volt A/C Power Supply – Offers substantial savings in installation costs compared to 240V systems
- VAV zone damper blade control set from the touch screen
- Stylish colour touch pad screen with ability to set 1 to 8 zones
- Easy set on/off zone selection
- Electronic zone labelling
- DIP Selectable Spill Air Safety System (SASS)
- Programmable time clock option
- Direct unit interface option

DIRECT UNIT INTERFACE OPTION

(See Sales Representative for details)

- Direct interface to control refrigerated air conditioning unit
- Additional unit interface card may be required
- Compatible with select unit brands only
- Functional unit operation:
 - Change system operating mode
 - Change system fan speed
 - Change system target temperature
 - Set flow rate to individual zones

CODE	DESCRIPTION
MZTP8	My Zone Touch Screen 1 to 8 Zones
MPCBT6	Multipoint 6 Zone Control Box with Transformer
MPCBT8	Multipoint 8 Zone Control Box with Transformer



MY ZONE 8 7 DAY ON/OFF PROGRAMMABLE TIME CLOCK OPTION

CODE	DESCRIPTION
C-CLK	Clock Module

MY ZONE KIT PRICING

ZONES	TOUCH SCREEN	CONTROL BOX	20m RED SHIELDED CABLE
1-6	MZTP8	MPCBT6	CAB20IAS
1-8	MSWS234	MPCBT8	CAB20IAS

MY ZONE 2 VAV ZONING SYSTEM with IOS App support

Features

- 24 Volt A/C Power Supply – Offers substantial savings in installation costs compared to 240V systems
- VAV zone damper blade control set from the touch screen
- Larger colour touch pad screen with ability to set 1 to 8 zones
- Easy Set Icon Screen Menu
- Standard 7 day programmable timer
- Favourites Programme Setting
- Service Timer Function
- Easy set on/off zone selection
- Electronic zone labelling
- Adjustable Selectable Spill Air Safety System (SASS)
- Programmable time clock option
- Direct unit interface option

CODE	DESCRIPTION
MZWFTP8	My Zone Touch Screen 1 to 8 Zones V2
MZWFCBT8	My Zone 1- 8 Zone Control Box with Transformer



IOS SUPPORT BY MY ZONE APP OPTION

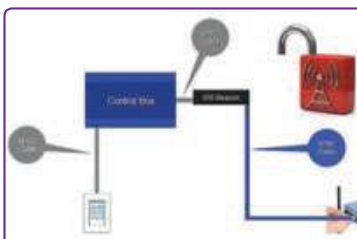
Features

- Control My Zone 2 system in the home with an iPad or iPhone
- Fully functional MyApp enables you to control the My Zone 2 system wherever you are in the home
- Choice of Hard Wired or Remote Wireless Kit Connection
- Backwards compatible to previously installed My Zone 6 and My Zone 8 Zoning Systems

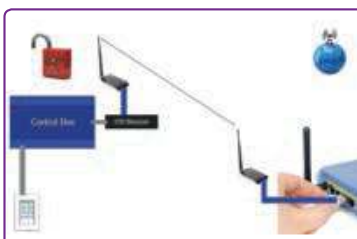


IOS SUPPORT BY MY ZONE APP OPTION

Hard Wired Kit



Remote Wireless Kit



CODE	DESCRIPTION
HARD WIRED KIT	
MZWIFCB	MY ZONE WI FI CONVERSION BOX
MZWIFHWKIT	MY ZONE HARD WIRED WI FI KIT

(Complete kit includes conversion box, looping cable for conversion box, 20m Ethernet cable, wall plate, 3m cable to connect to router)

CODE	DESCRIPTION
REMOTE WIRELESS KIT	
MZWIFCB	MY ZONE WI FI CONVERSION BOX
MZWIFHWKIT	MY ZONE HARD WIRED WI FI KIT

Complete kit includes conversion box, looping cable for conversion box, 2 x wireless routers, 2 x 100mm looping cables, 413 power adaptor

ZONESTAR

Single Zone 24VAC VAV Control System suitable for any application with a central source for cooling and heating such as reverse cycle systems.

Not for use in applications utilising zone re-heat.

Features LED zone status indication & InnoCab plug-in connection to damper motor.

ZONESTAR COMPONENT PRICING

CODE	DESCRIPTION
D-ZSP	Zonestar controller to suit 3Nm motorised damper
E-TFORM-X	240 – 24Vac Transformer plug pack 24 VA X Series



IAS ZONING ACCESSORIES

CODE	DESCRIPTION
CAB12	24v Blue 12m Cable Pre Plugged
CAB20IAS	24V Red Shielded 20m Cable Pre Plugged
ZBTRAN	Zone Boss 240-24V AC Transformer 24VA
E-TFORM-X	240-24V AC Transformer Plug Pack X Series
E-TOOL	Cable Crimping Tool

SMARTZONE PLUS

Multiple Zone 24VAC VAV Control System, supporting up to 8 zones. Features temperature control of each zone, support for multiple LCD touchpads, with InnoCab plug in connection to motors, touchpads & sensors.

CODE	DESCRIPTION
D-SZP-MPM	Smartzone main processor module
D-SZP-1234	Smartzone 1234 expansion module
D-SZP-5678	Smartzone 5678 expansion module
D-SZP-LCD-B	Smartzone LCD touchpad
D-RC	Smartzone room controller
D-DS	Smartzone duct sensor
D-RS	Smartzone room sensor
D-SZ-BRIDGE	Smartzone to BlackBox interface module
D-TPAD-EXP	Touchpad expansion module
C-CLK	Clock module
E-TFORM-X	240 - 24Vac Transformer plug pack X Series



ZONING Systems



Features

- 24 Volt A/C Power Supply – Offers substantial savings in installation costs compared to 240V systems
- Zone dampers wired direct to control box
- Choice of 2,4,6 or 8 button wall controls
- Stylish smoked glass wall control finish
- LED illuminated zone buttons
- Full open/ full closed zone damper operation
- Individual zone labelling

CODE	DESCRIPTION
ZBWS2	2 Zone control module
ZBWS4	4 Zone control module
ZBWS6	6 Zone control module
ZBWS8	8 Zone control module
ZBCB4	2 to 4 zone control box
ZBCB8	6 to 8 zone control box
ZBTRAN	240-24Vac Transformer plug pack 24 VA



ZONE BOSS KIT PRICING

ZONES	CONTROL MODULE	CONTROL BOX	TRANSFORMER	20M RED SHIELDED CABLE
2	ZBS2	ZB4	ZBTRAN	CAB20RE
4	ZBS4	ZB4	ZBTRAN	CAB20RE
6	ZBS6	ZB8	ZBTRAN	CAB20RE
8	ZBS8	ZB8	ZBTRAN	CAB20RE

ZONE BOSS ACCESSORIES

CODE	DESCRIPTION
ZBMPLATE	Zone Boss Wall Switch Mounting Plate
CAB1	Zone Boss Cable Lead 1m 24V Plug/Three Wire
CAB12	24v Blue 12m Cable Pre Plugged
CAB20RE	Zone Boss Cable Lead Shielded 20m 24V pre plugged
CAB50	Cable Roll 50m 24V
CAB100	Cable Roll 100m 24V
CA100RE	Red Shielded Cable Roll 100m 24V
PLUG50	Pack 50 Plugs



- Zone Boss Wall control module connects directly to motorised zone dampers. No control box required.
- 24 Volt A/C Power Supply
- Choice of 1,2 or 4 button wall controls
- 1 button wall control can be used as either a single zone control or open / closed day / night two zone control
- Stylish smoked glass wall control finish
- LED illuminated zone buttons
- Full open/full closed zone damper operation
- Individual zone labelling
- Selectable Spill Air Safety System (SASS) set at wall control

DIRECT WIRED WALL SWITCHES

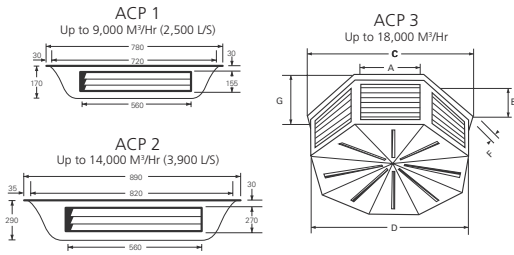
CODE	DESCRIPTION
ZBZS1	1 Zone Direct Wired Day/Night Control
ZBZS2	2 Zone Direct Wired Day/Night Control
ZBZS4	4 Zone Direct Wired Day/Night Control



ZONE BOSS DIRECT WIRED KIT PRICING

ZONES	CONTROL MODULE	TRANSFORMER	20m RED SHIELDED CABLE
1	ZBZS1	ZBTRAN	CAB20IAS
2	ZBZS2	ZBTRAN	CAB20IAS
4	ZBZS3	ZBTRAN	CAB20IAS

DROPPERS & Evap Plenums



PLASTIC EVAP PLENUMS

CODE
ACP 1
ACP 2
ACP 3

PLENUM PLATES

CODE
PP 1
PP 2
PP 3



DROPPER DUCTS

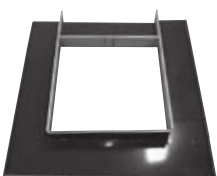
SIZE	GALVANISED	COLORBOND
	DGU	DCU
550 x 550 x 1200	1.	1.
550 x 550 x 1500	2.	2.
550 x 550 x 1800	3.	3.
550 x 900 (Contour)	4.	4.
550 x 650 x 1200	5.	5.
550 x 650 x 1500	6.	6.
550 x 800 x 1200	7.	7.
550 x 550 x 1200 (with lip)	8.	8.

Standard colours available: Slate Grey, Terra Red, Beige, River Gum Green
 * Dropper ducts are supplied unassembled



DEFLECTORS ACOUSTIC POLYSTYRENE

SIZE	CODE
Suits 550sq dropper 3 way deflection	WAY3
Suits 550sq dropper 4 way deflection	WAY4
Suits both 800 x 550 and 650 x 550 dropper	WAY4L



FLASHING KITS

(GAL)

(COLOURBOND)

SIZE	CODE
550 x 550	FG55
550 x 800	FG5580

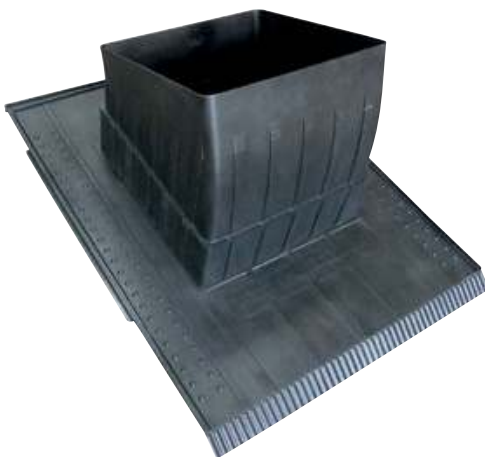
CODE
FC55
FC5580

DROPPER ADAPTOR & Flashing Design



REDUCES RISK OF INSTALLER INJURY

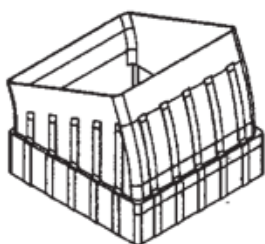
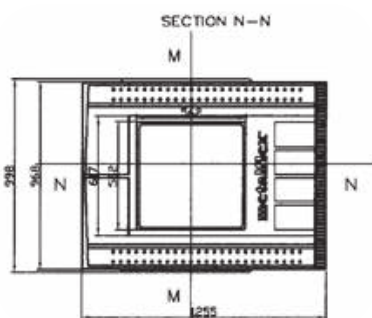
- ▶ No sharp edges
- ▶ Reduces time spent on roof
- ▶ Rigid design – easier to mount unit
- ▶ Lighter to carry
- ▶ Quick and easy assembly



Features

- Dropper adaptor fits over flashing providing a water-proof barrier
- Fits all domestic evaporative cooling unit makes
- Can be used on both tiled and Colorbond roofs
- Available in four colours: Slate Grey, Beige, Terra Red and Green
- A weatherseal can be installed in the Superseal Dropper™ to prevent cold draughts during winter
- UV stabilized polymer plastic construction will not rust or corrode
- No lead flashing required
- Easy to install – save time
- Multichute® fits all flexible duct sizes from 250mm to 500mm
- Ten year structural warranty
- Quick to install – save on installation costs
- One piece moulded flashing
- 6mm plastic thickness in key weight load areas
- 200mm long square outlet at bottom of flashing for easier installation

SIZES & SPECIFICATIONS



The Superseal Dropper & Flashing™ 10 point comparison chart

	Superseal™ Dropper	Colorbond Dropper	Galvanised Dropper
WATER-PROOF BARRIER DESIGN	✓	✗	✗
WILL NOT RUST OR CORRODE	✓	✗	✗
NO ADDITIONAL FLASHING REQUIRED	✓	✗	✗
QUICK EASY INSTALLATION	✓	✗	✗
SUITS ALL DUCTED EAC BRANDS	✓	✓	✓
COLOR MATCHES DUCTED EAC UNIT	✓	✓	✗
DECREASES BREAK-OUT NOISE FROM UNIT	✓	✗	✗
MULTICHUTE® INCREASES AIR-FLOW (UP TO 15%)	✓	✗	✗
MATERIAL THICKNESS (Key load area)	6.0mm	0.6mm	0.6mm
NO SHARP EDGES	✓	✗	✗

EIGHT EASY STEPS. SAVE TIME. SAVE MONEY.

STEP 1. Attach the Multichute® to the bottom of the flashing using 3 or 4 tech screws per side. Finish off by running silver foil tape to seal the Multichute® to the Superseal® flashing.



STEP 2. Pack the opening with timber off cuts if the distance between trusses is exceeds 550mm.



STEP 3. Install the flashing into the hole. For tile roofs, ensure that the flashing is clear of the tile batons. For metal roofs, slide flashing underneath the top.



STEP 4. Ensure flashing is square with the roof tiles/roof line and loosely install one screw per side to hold the flashing in place.

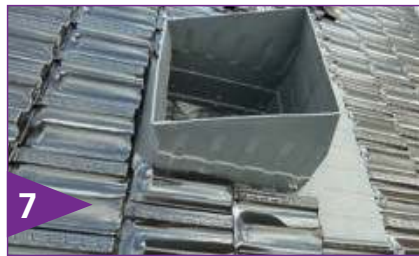


STEP 5. Place the dropper adaptor on the flashing. Place a level on the angle top and tilt the dropper adaptor until it is level. Screw in the Superseal® dropper adaptor.

STEP 6. Screw in the Superseal® flashing

STEP 7. Trim the end of the flashing (If required).

STEP 8. Fix and tape the flexible duct to the Multichute®. It is recommended that joiners are used.



• Takes only 20 minutes to install

multichute®

MULTI DUCT CONNECTOR

- Multichute® reduces breakout noise (from cooler)
- Multichute® increases air flow by up to 15%
- Multichute® comes complete with nylon duct ties
- Multichute® fits both Superseal dropper™ and metal constructed droppers
- Made from strong canvas material
- Available in 2 sizes, small and large
- Easier to handle and install than conventional plastic Y's
- Comes complete with nylon duct ties

SIZE	CODE
SUPERSEAL™ DROPPER*	SADAPT-
SUPERSEAL™ FLASHING*	SWPFLAS-
MULTICHUTE® (4 WAY AIR BAG)	MCHUTE4
MULTICHUTE® (3 WAY AIR BAG)	MCHUTE3
BRIVASAPTCB	Brivis Evap Adaptor Colorbond 565 x 565
BRIVASAPT6AL	Brivis Evap Adaptor Galv 565 x 565

* Code followed by:
S = Slate B = Beige R = Terra Red G = Green

FLOOR Registers



Classic™

the **classic**
smartvent[®] range

SIZE	CODE
300 x 100 Classic™	SV3010
350 x 150 Classic™	SV3515

Code followed by colour number (listed below)

- Classic design
- Suits all décors
- 15 colours to choose from
- Multiblade damper control
- Made from impact-resistant ABS plastic
- Proven design

SMARTVENT[®] Colour Range

	Beige	Cream	Baltic Pine	Coffee	Chocolate	Rustic Brown	Grey	Slate	Tan	White	Dark Beige	Pink	Light Green	Mushroom	Black
	1	2	3	4	5	6	7	8	9	10	11	12	13	14	15
CLASSIC™	■	■	■	■	■	■	■	■	■	■	■	■	■	■	■



Pressed Metal

PRESSED METAL FLOOR REGISTERS

SIZE	CODE
300 x 50 •	SVM305
300 x 100 *	SVM3010
350 x 50 •	SVM355
350 x 150 *	SVM3515

Colours • Beige Only • Beige & White

- The classic design still going strong
- Twin multi-blade damper control
- Made from 1.2mm high grade pressed steel
- Ideal for high traffic areas
- Powder coated gloss paint finish
- Suits all décors
- Proven design



Linear Bar

LINEAR BAR FLOOR REGISTERS

SIZE	CODE
300 x 100 •	SVB3010
350 x 150 •	SVB3515
400 x 100 •	SVB4010

* Allow for metal boots on linear bar register. **Colours** • Beige & White

- Ideal for high traffic areas
- Designed for add-on airconditioning systems
- Greater free area – means more air, less noise
- Made from extruded aluminium profile
- Modern slimline design
- Arm adjustable opposed blade damper control
- Suits all décors
- Powder coated gloss paint finish
- Suits floor and wall installations



EZY-SNAP MOUNTING SYSTEM



Multijet™

the **multijet**™ ROUND DIFFUSER

SIZE	CODE
150 – Jet Type	MJ150
200	MJ200
250	MJ250
300	MJ300

- Modern sleek design
- Flush ceiling mounted
- Suits all décors
- High gloss white finish
- Ideal choice for ducted heating systems
- CAD computer design
- Adjustable shut-off twin damper blade
- Made from impact resistant ABS plastic



Fullcone™

the **fullcone**™ ROUND DIFFUSER

SIZE	CODE
100 – Fullcone™ Type	CD100
125	CD125
150	CD150
200	CD200
250	CD250
300	CD300

- Classic design still going strong
- Suits all décors
- Designed to suit refrigerated systems
- CAD computer design
- Adjustable concentric cone – achieves better air distribution
- Etched white finish
- Made from impact resistant ABS plastic



Multicone™

the **multicone** ROUND DIFFUSER

SIZE	CODE
150 – Multicone™ Type	MC150
200	MC200
250	MC250
300	MC300

- Stylish streamline design
- Flush ceiling mounted
- Suits all décors
- Designed to suit both refrigerated and gas heating systems
- CAD computer design
- Adjustable concentric cone – achieves better air distribution
- High gloss white finish
- Made from impact resistant ABS plastic

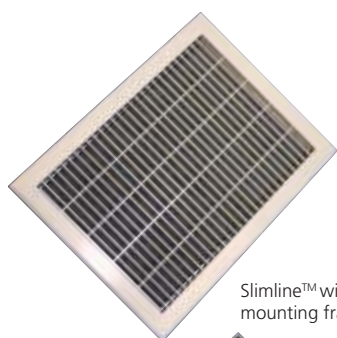


***builder's choice** ROUND CEILING DIFFUSERS

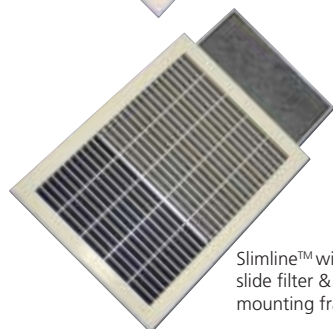
SIZE	CODE
150 – Jet Type	BVJ150
200	BVJ200

- Matte White Finish
- Made from impact resistant ABS plastic
- EZY-Snap mounting system
- Adjustable inner body that can be swivelled to direct air flow
- Flush ceiling mounted

RETURN AIR Grilles



Slimline™ with mounting frame



Slimline™ with slide filter & mounting frame



SGB3737



the slimline™

SLIMLINE™ GRILLE WITH MOUNTING FRAME

SIZE	CODE
380 x 510	SGP3851
400 x 750	SGP4075
500 x 900	SGP5090
400 x 1000	SGP40100

SLIMLINE™ GRILLE WITH FILTER AND MOUNTING FRAME

SIZE	CODE
380 x 510	SGF3851
400 x 750	SGF4075
500 x 900	SGF5090
400 x 1000	SGF40100

- Slimline™ modern look
- CAD-computer design
- High gloss white finish
- Made from impact resistant ABS plastic
- More open louvre means more air, less noise
- EZY-Slide filter track for removing Design 2000 filter
- EZY-Snap mounting frame
- Designed to suit both wall and ceiling installations

the slimline™ *builder's choice

SLIMLINE™ GRILLE WITH MOUNTING CLIPS

SIZE	CODE
370 x 370	SGB3737
530 x 260 T/Bar Face	SGB5326
560 x 370	SGB5637

SGB 3737 can be used to replace Vulcan old style plastic grille. Multivent adaptors fit this product.

the slimline™ *builder's choice

LOUVRED RETURN AIR GRILLES

SLIMLINE™ GRILLE WITH MOUNTING FRAME

SIZE	CODE
900 x 350	BG9035
1200 x 350	BG12035

SLIMLINE™ GRILLE WITH FILTER & MOUNTING FRAME

SIZE	CODE
900 x 350	BGF9035
1200 x 350	BGF12035

- Ideal for narrow return air grille installations – only 350mm wide
- Slimline modern look
- High gloss white finish
- Made from impact resistant ABS plastic
- Louvre angled at a 30° pitch
- EZY-Slide filter track for removing Design 2000 filter
- Ezy-Snap mounting frame
- Designed to suit both wall and ceiling installations
- CAD computer design
- Simple and easy to install



multivent® PRODUCTS

MULTIVENT® – ADJUSTABLE BLADES



Multivent® diffuser

SIZE	CODE
300 x 150 – 2 Module	MV15
370 x 185 – "	MV20
530 x 265 – " T/Bar Face	MV26
230 x 230 – "	MV23 2
230 x 230 – 4 Module	MV23 4
300 x 300 – "	MV30
350 x 350 – "	MV35
370 x 370 – "	MV37
450 x 450 – "	MV45
560 x 370 – 6 Module	MV55
520 x 350 – " T/Bar Face	MV52
530 / 595 – 4 Module T/Bar Face	MVTB

- Slimline contemporary design
- Flush ceiling mounted
- Suits all décors
- High gloss white finish
- 12 sizes to choose from
- Made from impact resistant ABS plastic
- Fully adjustable blade for better air throw
- CAD computer designed
- A wider louvre design means more air, less noise
- Designed to suit both ceiling and wall installations
- Easy removable centre for easy cleaning
- Louvre can be shut closed for winter
- EZY-Snap mounting system
- Dishwasher proof
- Full range of snap-on adaptors
- Cushion Boxes (page21)

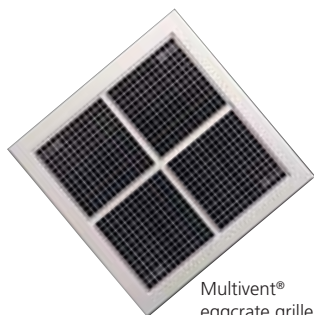


Multivent® grilles

MULTIVENT® DOUBLE DEFLECTION (Wall Mounted)

SIZE	CODE
300 x 150 – 2 Module	MW15
370 x 185 – "	MW20
530 x 265 – " T/Bar Face	MW26

Multivent adaptors fit this product.



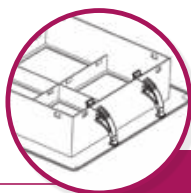
Multivent® eggcrate grille

MULTIVENT® – EGGCRATE

SIZE	CODE
230 x 230 – 1 MODULE	ME230
300 x 300 – 4 "	ME300
370 x 370 – 4 "	ME370
530 / 595 – 4 " T/Bar Face	ME595

Multivent adaptors fit this product.

Diffusers



NYLON QUICK-FASTENING SYSTEM

* multi-directional diffusers builder's choice



SIZE	CODE
230 x 230 4 Module	BV23-4
300 x 300 "	BV30
370 x 370 "	BV37
520 x 350 – 6 Module T/Bar face	BV52

- Matt white stippled finish
- NEW Nylon Quick-Fastening system
- Made from impact resistant ABS plastic
- 4 sizes to choose from
- Full range of snap-on adaptors
- Wider louvre design means more air, less noise
- Soft rounded corners

INSULATED PLASTIC CUSHION BOXES

SIZE	CODE
230 x 230 – 150mm	MB23D15I
230 x 230 – 200mm	MB23D20I
300 x 300 – 200mm	MB30D20I
300 x 300 – 250mm	MB30D25I
450 x 450 – 200mm	MB45D20I
450 x 450 – 250mm	MB45D25I
450 x 450 – 300mm	MB45D30I

- Insulated with closed cell insulation
- Manufactured from virgin polypropylene black plastic
- Aerodynamically curved box creates a more even airflow
- Suits 230, 300 and 450 range of square diffusers
- Low profile fits between ceiling joists in two storey homes
- Snap on connection – no screws or rivets required
- Twin butterfly damper for balancing airflow

SIZING SPECIFICATIONS

NECK SIZE (mm)	FACE SIZE (mm)	2 WAY	4 WAY	6 WAY	ADAPTOR TO FLEXIBLE DUCT (Snap-on)	CUT OUT SIZE (mm)	Adjustable Blade	Egg Crate Exhaust	Louvre Return	Double Deflection	Builders Choice
300 x 150	362 x 211	■			200° 150°	335 x 115	■			■	
230 x 230	293 x 293	■	■		250° 200° [∧] 150° [∧]	265 x 265	■	■			■
300 x 300	365 x 365		■		300° 250° [∧] 200° [∧]	335 x 335	■	■		■	■
350 x 350	415 x 415		■		350 300°	385 x 385	■				
520 x 350	415 x 595*			■	450 400 350	355 x 560	■				■
370 x 185	430 x 247	■			300° 250° 200°	405 x 190	■		■	■	
370 x 370	435 x 435		■		400 350 300°	405 x 405	■	■	■	■	■
560 x 370	435 x 612			■	500 450 400	405 x 590	■		■	■	
450 x 450	508 x 508		■		450 400 350 300° [∧] 250° [∧] 200° [∧]	475 x 475	■				
530 x 265	595 x 295*	■			400 350 300° 250°	535 x 300	■	■	■	■	
530 x 530	595 x 595*		■		450 400 350 300° 250° 200°	540 x 540	■	■	■	■	

* Suits T/bar ceilings [∧]Cushion Box available ° Adaptors with twin blade butterfly damper » Requires 530sq-450sq reducing adaptor

MULTIVENT[®] – ADAPTOR ONLY



Adaptors fitted with twin butterfly dampers

SIZE	WITH DAMPER		WITHOUT DAMPER	
		CODE		CODE
300 x 150	150	MA15D15		
	200	MA15D20		
370 x 185	200	MA20D20		
	250	MA20D25		
	300	MA20D30		
230 x 230	150	MA23D15		
	200	MA23D20		
	250	MA23D25		
530 x 295	250	MA26D25		
	300	MA26D30		MA2630
	350			MA2635
	400			MA2640
300 x 300	200	MA30D20		
	250	MA30D25		
	300	MA30D30		MA3030
350 x 350	300	MA35D30		MA3530
	350			MA3535
370 x 370	300	MA37D30		MA3730
	350			MA3735
	400			MA3740
450 x 450	200	MA45D20		
	250	MA45D25		
	300	MA45D30		
	350			MA4535
	400			MA4540
520 x 350	450			MA4545
	350			MA5235
	400			MA5240
	450			MA5245
	500			MA5250
560 x 370	400			MA5540
	450			MA5545
	500			MA5550

SQUARE TO SQUARE REDUCING ADAPTORS

CODE	DESCRIPTION	SIZE
MSA3023	Multisnap [®] Adaptor	300 x 300 – 230 x 230
MSA3730	" "	370 x 370 – 300 x 300
MSA5345	" "	530 x 530 – 450 x 450
MSA5537	" "	555 x 400 – 370 x 370

CEILING Diffusers



the **smartdiffuser**[®]
square ceiling diffuser
range

EZY-SNAP MOUNTING SYSTEM



Smartdiffuser[®] 4 Way



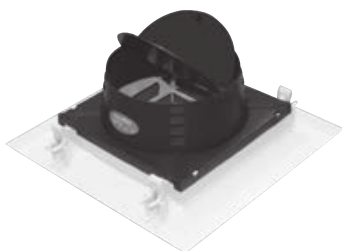
SD595

SDP595

smartdiffuser[®]

NECK / FACE SIZE	CODE
230 / 350 – 4 Way FACE	SD3525
300 / 420 – 4 Way "	SD4230
450 / 595 – 4 Way " T/Bar Face	SD595
450 / 595 – Perforated " T/Bar Face	SDP595

- Modern sleek design
- Ideal for domestic and commercial refrigeration systems
- High gloss white finish
- Made from impact resistant virgin ABS plastic
- CAD Computer designed
- Easy removable core for cleaning
- Full range of adaptors with adjustable twin butterfly damper
- Full range of snap-on cushion boxes with adjustable twin butterfly damper
- EZY-Snap mounting system



Plaster mounted ceiling diffusers come with EZY-SNAP mounting clips

NECK SIZE (mm)	FACE SIZE (mm)	4 WAY	PERF.	ADAPTOR TO FLEXIBLE DUCT (Snap-on)			CUT OUT SIZE	
SMARTDIFFUSERS™								
230 x 230	350 x 350	■		200 ◊^	150 ◊^	250 ◊	295 x 295	
300 x 300	420 x 420	■		300 ◊	250 ◊^	200 ◊^	365 x 365	
450 x 450	595 x 595*	■	■	350	300 ◊^	250 ◊^	200 ◊^	540 x 540
360 x 360	595 x 595*	■		350	300 ◊	250 ◊	200 ◊	420 x 420

* Suits T/Bar Ceilings

^ Cushion Box available ◊ Adaptor with twin damper blade

JM602R PLASTIC T/BAR DIFFUSER

SIZE	CODE
360 / 595	JM602R



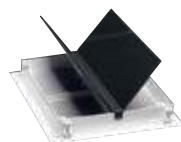
JM602R – T-Bar Face Removable Centre



Adaptor for JM602R

JM602R ADAPTORS WITH BUTTERFLY DAMPER

SIZE	CODE
360 x 360 – 200	A20D
360 x 360 – 250	A25D
360 x 360 – 300	A30D
360 x 360 – 350	A35



MSV370

MULTI-SECURITY VENTS

SIZE	CODE
370 x 370	MSV370
560 x 370	MSV560

VENTILATION Products



EZY-SNAP MOUNTING SYSTEM



Squarejet

SQUARE JET CEILING DIFFUSERS

SIZE	CODE
100 – Jet Type	SJ100
125	SJ125
150	SJ150
200	SJ200

Square Jet Diffuser fits round hole. Easy to square up.



Multigrille

MULTIGRILLE EGGCRATE DIFFUSERS

SIZE	CODE
150 – Eggcrate Type	MG150
200	MG200
250	MG250
300	MG300

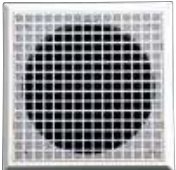


ECA150

EGGCRATE GRILLES

NECK SIZE	CODE
100 Eggcrate with adaptor, clips and damper	ECA100
125 " "	ECA125
150 " "	ECA150
200 " "	ECA200
250 " "	ECA250
125 Fixed Face	OAE125
150 "	OAE150

ECA Grilles fit round hole (easy to square up)



OAE150



LCA150

LOUVRE GRILLES

NECK SIZE	CODE
100 Non-return with adaptor and clips	Gravity LCA100
125 " "	" " LCA125
150 " "	" " LCA150
200 " "	" " LCA200
250 " "	" " LCA250
125 Fixed Louvre	OAL125
150 "	OAL150

ECL Grilles fit round hole (easy to square up)



OAL150

DIFFUSERS & Grilles



EZY-SNAP MOUNTING SYSTEM



Full range available

CEILING DIFFUSERS (Aluminium)

NECK SIZE	CODE
230 / 350	JM3525L
300 / 420	JM4230L
370 / 490	JM4937L
450 / 595 T/Bar with Safe-T-Chain	JM595L
595 x 595 Mounting Frame (Suits JM595L)	PSF595

Plaster mounted ceiling diffusers come with EZY-SNAP mounting clips.

NECK SIZE (mm)	FACE SIZE (mm)	4 WAY	ADAPTOR TO FLEXIBLE DUCT (Snap-on)			CUT OUT SIZE
PROFILER™ CEILING DIFFUSERS						
230 x 230	350 x 350	■	200 °«	150 °«		295 x 295
300 x 300	420 x 420	■	300 °	250 °«	200 °«	365 x 365
370 x 370	490 x 490	■	350	300 °		435 x 435
450 x 450	595 x 595*	■	350	300 °«	250 °« 200 °«	540 x 540

* Suits T/Bar Ceilings

° Adaptor with twin damper blade « Suits MB plastic cushion box



Swirl diffusers

SWIRL DIFFUSERS

SIZE	CODE
150Ø / 250Ø	SW150
595 x 595 T/Bar	SW595
595 x 595 – 300 outlet T/Bar	SW595 300
595 x 595 – 350 outlet T/Bar	SW595 350
595 x 595 – 400 outlet T/Bar	SW595 400

- Powder coated gloss white finish
- Modern slimline design
- Made from high grade 0.6mm pressed steel
- Suits high ceiling applications
- Ideal for commercial heating and refrigeration systems



Aluminium slot diffusers

LINEAR SLOT DIFFUSERS

FACE SIZE	NECK SIZE	CODE
2 Slot 595 x 130	565 x 98	LSD 2 595
2 Slot 1038 x 130	990 x 98	LSD 2 1000
2 Slot 1195 x 130	1160 x 98	LSD 2 1195
3 Slot 595 x 168	565 x 135	LSD 3 595
3 Slot 1195 x 168	1160 x 135	LSD 3 1195
Register Spring		SPRING

The above linear slots are ex-stock and are designed to suit both T/Bar and plaster ceilings. Removable core for easy mounting.

Note: Screw fix core after installation is recommended



No fixing required, just cut the hole and push together

DOOR RELIEF GRILLES

SIZE	CODE
450 x 160	DG4516
600 x 160	DG6016
600 x 200	DG6020
600 x 260	DG6026
600 x 300	DG6030
600 x 360	DG6036
600 x 400	DG6040
600 x 460	DG6046
600 x 600	DG6060



WP2525

WEATHERPROOF LOUVRES

SIZE	CODE
150 x 150	WP1515
200 x 200	WP2020
250 x 250	WP2525
300 x 300	WP3030
350 x 350	WP3535
400 x 400	WP4040



Jet Diffusers

SURFACE MOUNTED JET DIFFUSERS

CODE	NECK	FACE
AJ20	200	265
AJ25	250	325
AJ30	300	375
AJ35	350	425
AJ40	400	475

EGGCRATE

Return Air Grilles

PROFILE™ Aluminium Egg Crate Grille

- 17 sizes without filter (ex-stock)
- Code EC, followed by size
- Powder coated gloss white finish
- Slimline bevelled profile frame
- Complete aluminium construction
- 12mm x 12mm square lattice core
- Designed to suit both wall and ceiling installations
- Hinged core for removable filter and ease of installation
- Design 2000 filter (standard)
- 15 sizes with filter (ex-stock)
- Code ECF, followed by size



Full range available

ALUMINIUM EGGCRATE LOOSE CORE WITH CLIP

CODE	SIZE
EC1515	150 x 150
EC2020	200 x 200
EC2323	230 x 230
EC2525	250 x 250
EC3030	300 x 300
EC3535	350 x 350
EC4040	400 x 400
EC4545	450 x 450
EC5040	500 x 400
EC595	½ T/Bar 595 x 595
EC6030	600 x 300
EC6040	600 x 400
EC7540	750 x 400
EC8030	800 x 300
EC9040	900 x 400
EC9050	900 x 500
EC1195	Full T/Bar 595 x 1195
SPRING	

Now fitted with retaining plaster clip.

ALUMINIUM EGGCRATE WITH FILTER

CODE	SIZE
ECF4040	400 x 400
ECF4545	450 x 450
ECF5040	500 x 400
ECF595	½ T/Bar 595 x 595
ECF6030	600 x 300
ECF6040	600 x 400
ECF7540	750 x 400
ECF7555	750 x 550
ECF8030	800 x 300
ECF9040	900 x 400
ECF9050	900 x 500
ECF10040	1000 x 400
ECF12040	1200 x 400
ECF1195	Full T/Bar 595 x 1195
ECF15040	1500 x 400



All filtered return air grilles are supplied with our Design 2000 filter..

ALUMINIUM EGGCRATE SHEET (Painted White)

CODE	SIZE
ECP595	595 x 595 T/Bar
ECP1195	595 x 1195 T/Bar



Removable core for easy mounting

DOUBLE DEFLECTION WALL REGISTERS

WALL REGISTERS ALUMINIUM REMOVABLE CORE

SIZE & CODE
WSD3010
WSD3015
WSD3030
WSD3515
WSD3520
WSD3535
WSD4015
WSD4020
WSD4035

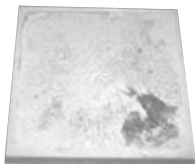
SIZE & CODE
WSD4520
WSD4545
WSD5020
WSD5025
WSD5050
WSD6015
WSD6020
WSD6040



Full range of tapes

TAPES

ITEM	DESCRIPTION	CODE
PVC Tape – Grey	50mm x 30m Roll	DTAPEG
PVC Tape – Black	50mm x 30m Roll	DTAPEB
Hanging Tape	25mm x 50m Roll	H TAPE
Silver Tape (Plain Foil)	50mm x 50m Roll	ST50
Silver Tape (Plain Foil)	75mm x 50m Roll	ST75
Silver Tape (Reinforced)	50mm x 50m Roll	STR50
Silver Tape (Reinforced)	75mm x 50m Roll	STR75



Foam Slab

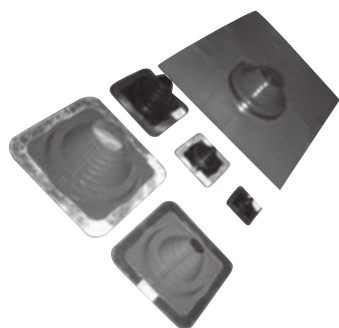


Polyslab

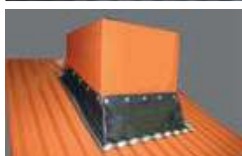
SUNDRY ITEMS

ITEM	DESCRIPTION	CODE
Filter (500 x 1000)	R/ment for return grille	R FILTER
Lintel Bar	1100mm x 4mm	LIN1100
Lintel Bar	1300mm x 4mm	LIN1300
Lintel Bar	1100mm x 5mm Mild	BAR1100
Lintel Bar	1300mm x 5mm Mild	BAR1300
P Trap		P TRAP
Chip Board	1800 x 600 x 16	CHIP 18
Chip Board	2400 x 600 x 18	CHIP 24
Chip Board (Structural Floor Grade)	1800 x 600 x 19	CHIP 19
Timber Support	90 x 35 x 2400 long	TIM24
Thermo Wire Fig 8	100m Roll	WIRE 1
Concrete Slab	450 x 450	SLAB18
Concrete Slab	600 x 450	SLAB24
Foam Slab	450 x 450	SLAB18F
Foam Slab	600 x 450	SLAB24F
Foam Slab	600 x 600	SLAB2424F
Poly Slab	339 x 639	PSACSML (120kg)
Poly Slab	465 x 885	PSACMED (120kg)
Poly Slab	650 x 1130	PSACLGE (160kg)
SILICON	Silicon Clear	SIL

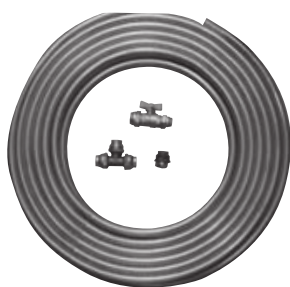
PLUMBING Accessories



Tiled Roof



Metal Roof



FLUE ACCESSORIES

ITEM	CODE
100mm Flue x 1800 Long	FLUE100
100mm Gas Cowl	COWL100
100mm Flashing Clip	CLIP100
100mm Bolted Sleeve	SLEEV100
100mm 45 degree bend	BEND10045
100mm 90 degree bend	BEND10090
125mm Flue x 1800 Long	FLUE125
125mm Gas Cowl	COWL125
125mm Flashing Clip	CLIP125
125mm Bolted Sleeve	SLEEV125
125mm 45 degree bend	BEND12545
125mm 90 degree bend	BEND12590

ROOF FLASHING ACCESSORIES *(Tile & Tin)*

ITEM	CODE
DEKTITE PREMIUM 0-35mm BLACK	AFE0B
DEKTITE PREMIUM 5-55mm BLACK	AFE1B
DEKTITE PREMIUM 5-120mm BLACK	AFE3B
DEKTITE PREMIUM 5-120mm RED	AFS3R
DEKTITE PREMIUM 110-170mm BLACK	AFE4B
DEKTITE PREMIUM 110-170mm RED	AFS4R
DEKTITE PREMIUM 160-300mm BLACK	AFE6B
DEKTITE PREMIUM 290-440mm BLACK	AAE8B
DEKTITE Nu-Lead 12-70mm BLACK	VLEM1B
DEKTITE Nu-Lead 50-170mm BLACK	VLEC3B
DEKTITE Nu-Lead 50-170mm RED	VLSC3R
DEKTITE Aluminium 50-170mm BLACK	SDA101
DEKTITE Aluminium 50-170mm RED	SDA201RE
LEAD FLASHING 100	FLC 100
LEAD FLASHING 125	FLC 125

EVAPORATIVE COOLING ROOF FLASHINGS

SIZE	CODE
WAKAFLEX DROPPER FLASHING	
280mm x 5 Roll Code followed by (GY) Grey, (BM) Black or RD (Terracotta)	WFDF
LEAD FLASHING	
Evap Dropper Box Flashing to suit tiled roof	SDA550
Evap Dropper Box Flashing to suit metal roof	DFE550

COPPER ACCESSORIES

ITEM	CODE
15mm Copper Pipe x 18m TYPE B	COP15
15mm Gas Cock	GC15
15mm Comp Tee	CUT15
15mm Comp Union FI to C	CUUF15
15mm Comp Union MI to C	CUUM15
15mm Comp Union C to C	CUU15
20mm Copper Pipe x 18m TYPE B	COP20
20mm Gas Cock	GC20
20mm Comp Tee	CUT20
20mm Comp Union FI to C	CUUF20
20mm Comp Union MI to C	CUUM20
20mm Comp Union C to C	CUU20

REPLACEMENT PUMPS & SPARE PARTS

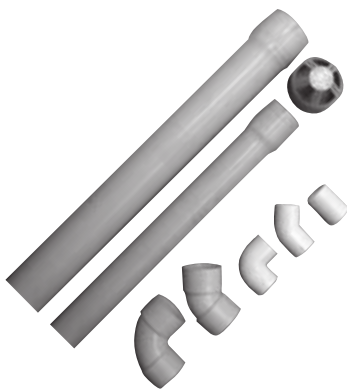


ITEM	CODE	DESCRIPTION
JRM Pump 19	EP19ST	
JRM Pump 28	EP28ST	
JRM Pump 38	EP38ST	
JRM Pump 50	EP50ST	
Breezeair Pump	PUMP1	
Contour Pump	17245	Askol Pump
Evap Filter Basket	JBASKET	
240V Soleniod	8140	Brivis Solenoid
24V Solenoid	834320	Seeley Solenoid
Dump Valve Kit 1	6001331	with transformer
Dump Valve Kit	6001342	no transformer
Dump Valve Body	6001336	no elbow
Dump Valve Body	6001340	with 6mm elbow
24v Solenoid	6001341	with 6mm connector
Transformer with leads	6001334	
6ml Elbow	6001333	
6ml Straight Connector	6001338	



EVAPORATIVE COOLER MOTORS

CODE	DESCRIPTION
BRIV315MTR	Brivis 315W Axial Evap Motor + Capacitor
BRIV750MTR	Brivis 750W Axial Evap Motor + Capacitor
SEEL600MTR	Seeley 600W Evap Motor
SEEL750MTR	Seeley 750W Evap Motor
BREEZ550MTR	Breezeair 550W Direct Drive Evap Motor
BREEZ750MTR	Breezeair 750W Direct Drive Evap Motor
BREEZ1100MTR	Breezeair 1100W Direct Drive Evap Motor



PVC PIPE & FITTINGS

CODE	DESCRIPTION
PVC100	100mm PVC 3m Length
PVC10090	100mm PVC 90° Bend
PVC10045	100mm PVC 45° Bend
PVC65	65mm PVC 3m Length
PVC65C	65mm PVC Cowl
PVC6590	65mm PVC 90° Bend
PVC6545	65mm PVC 45° Bend
PVC40	40mm PVC 3m Length
PVC4090	40mm PVC 90° Bend
PVC4045	40mm PVC 45° Bend
PVC40S	40mm PVC Socket
PVC40EC	40mm PVC End Cap
PVC20	20mm PVC 6m Length
PVC2090	20mm PVC 90° Bend
PVC20T	20mm PVC Tee
PVC20S	20mm PVC Socket
PVC20SC	20mm Saddle Clip

VIBRATION

Products

ISOLATION MOUNT



The snug fitting top and bottom "rubber" cups ensure acoustic isolation and incorporate a non-skid pattern. Steel inserts, which fit into the underside of the rubber cups, are supplied for all-except the D20 and D30 spring mounts.

SIZE	TYPE	MAX LOAD Kg	COLOUR
D20	ISOLATION MOUNT	20	RED
D30	"	30	SILVER
D45	"	45	GOLD
D70	"	70	BLACK
D100	"	100	GREEN

LEVELING SPRING MOUNT



The leveling spring mount provides approximately 35mm of height adjustment. They have a "rubber" bottom cup with metal insert, and a steel top cup with M10 bolt with adjustment nuts and washers fitted.

SIZE	TYPE	MAX LOAD Kg	COLOUR
D20LSM	LEVELING MOUNT	20	RED
D30LSM	"	30	SILVER
D45LSM	"	45	GOLD
D70LSM	"	70	BLACK
D100LSM	"	100	GREEN

SPRING HANGER MOUNT



Spring hangers are suitable for use with threaded rods up to 12mm in diameter, and have a "rubber" top cup with metal insert, and a steel bottom cup. They are used inverted in a spring hanger box.

SIZE	TYPE	MAX LOAD Kg	COLOUR
D20SH	SPRING HANGER	20	RED
D30SH	"	30	SILVER
D45SH	"	45	GOLD
D70SH	"	70	BLACK
D100SH	"	100	GREEN

SPRING HANGER BOX



Robustly constructed from steel and powdercoated. (Spring mount not included)

SIZE	TYPE	MAX LOAD Kg	COLOUR
SHB-Y	HANGER BOX	100	YELLOW
SHB+NI	HANGER BOX + NEO INSERT	100	YELLOW

CONDENSER MOUNT



Mounted in oil-resistant neoprene. Zinc plated screws and washers fitted.
Non-skid base – fixing to base not normally required.
Corrosion free – metal parts are embedded in Neoprene. Unladen height 37mm.

CODE	TYPE	MAX LOAD Kg	COLOUR
WBMA RED	Neoprene Mount	15-30	RED
WBMA GREEN	"	25-50	GREEN
WBMA BLUE	"	40-80	BLUE
WBMA YELLOW	"	90-180	YELLOW

CONDENSER MOUNT



Mounted in oil-resistant neoprene. Zinc plated screws and washers fitted. Non-skid base not normally required. Corrosion free – metal parts are embedded in Neoprene.

SIZE	TYPE	MAX LOAD Kg	COLOUR
NMA WHITE	Neoprene Mount	7-20	WHITE
NMA RED	"	15-40	RED
NMA GREEN	"	30-70	GREEN
NMA BLUE	"	50-100	BLUE
NMB RED	"	30-70	RED
NMB GREEN	"	50-100	GREEN
NMB BLUE	"	80-170	BLUE
NMB YELLOW	"	150-300	YELLOW

ANTI-VIBRATION RUBBER PAD TEAR AWAY SQUARES



CODE	SIZE (L x W x H)
ADG 3310K	300 x 300 x 10
ADG 3315K	300 x 300 x 15

Insulation

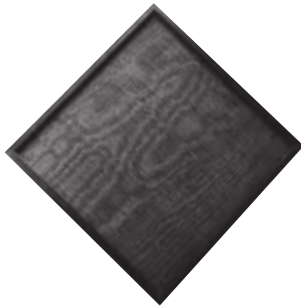


5mm x 1000mm x 50m Polylite™ Roll

polylite® STICK-ON INSULATION (FOIL) 5mm THICK

SIZE	CODE
10m Roll 1000 wide x 5mm	FF105
50m Roll 1000 wide x 5mm	FF505
Acoustic insulation 2000 x 1000 Egg Foam (Run Out)	AEF200100

5mm Polylite® stick-on insulation ideal for insulating metal duct to prevent condensation



* Replacement filters for Metalflex™ ECF and SmartGrilles®

DESIGN 2000 FILTERS (REPLACEMENT FILTERS)

CODE
RF 4040
RF 5555
RF 6040
RF 7540
RF 9040
RF 9050
RF 10040
RF11555
RF 12040

INSULATED Copper Pipe



20m Paired insulated copper

INSULATED PAIRED COPPER PIPE

MODEL	SIZE (mm)	ROLL (m)
PC1438	6.4 x 9.5	20
PC1412	6.4 x 12.7	20
PC1458	6.4 x 15.9	20
PC3858	9.5 x 15.9	20
PC3834	9.5 x 19.1	20
PC1234	12.7 x 19.1	20

Meets R-410A requirements



Condenser mounts



CONDENSER MOUNTS (WITH BOLTS)

CODE	COLOUR	MATERIAL	SIZE (MM)				
			A	B	C	D	E
RB 330	IVORY	ABS	330	383	78	84	130
RB 450	IVORY	ABS	450	500	90	84	130

Condenser mounts complete with stainless steel bolts, nuts and washers (2 per mount).

Manufactured out of impact resistant ABS hardened UV stabilised plastic.

QUICK BASE

CODE	
PQB2000	2000mm long

Quick base condenser mount complete with stainless steel bolts, nuts and washer (2 per metre). Manufactured from extruded UV stabilised ABS plastic.

METAL CONDENSER SUPPORT CHANNEL

CODE	
MCS700	50 x 50 x 50 x 700mm long
MCS1000	50 x 50 x 50 x 1000mm long

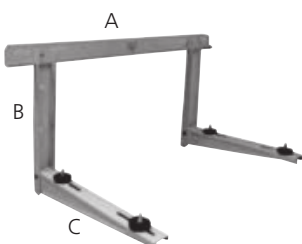
Metal condenser support channel. Manufactured from 1mm Gal Steel.

REFRIGERATION PIPE COVER (COLORBOND)

SIZE		CODE
Top Hat Section (75 x 100 x 75)	2400 Long	RCAPH

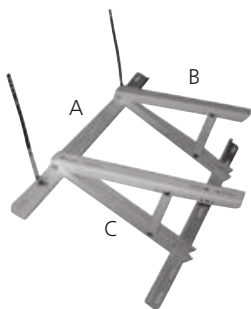
Metal colorbond capping. Full range of colours available. 2400mm long check with your local branch for colours availability.

CONDENSER Wall Brackets



QUIKFIT™ CONDENSER WALL BRACKETS

CODE	A	B	C	KG
QB420	780	365	420	90
QB450	780	365	450	100
QB550	800	465	550	120
QB610	900	465	610	150



QUIKFIT™ CONDENSER ROOF BRACKETS

CODE	A	B	C	KG
QR420	780	420	420	80
QR500	780	500	500	120



RUBBER CONDENSER MOUNTS

CODE	KG
CM210	210

CODE
RE80



DRAIN HOSE Ø14

CODE	SIZE
DRH14	14Ø x 50 metre roll



SAUERMANN CONDENSATE PUMPS

- Supplied with 1.5m electrical cable and plug
- Thermal Protection 90°C on the pump coil
- Rubber mounting and vibration bracket included

APPLICATION	CODE	FLOW RATE L/HR (MAX)	SUCTION HEAD (MAX)	DISCHARGE HEAD (MAX)	ALARM CONTACT (AMPS REST.)
Airconditioner up to 20kW	EASY20	20	2	6	8

WALL HUNG Capping

ACCESSORIES ARE MADE FROM UV STABILISED ABS PLASTIC – COLOUR: IVORY

SLEEK DESIGN, EASY TO INSTALL

This decorative pipe covering duct is designed to neatly conceal the pipe work of a refrigerated airconditioning system. Available in ivory, the pipe work is slimline and square in design to blend in with the exterior lines of a home. The duct is made of a highly durable plastic that will not rust or deteriorate.



DUCT

CODE	SIZE (MM)				LENGTH
	A	B	C	D	
RD 80	60	73	78	58	2400
RD 100	68	116	114	93	2400

WALL CAP

CODE	SIZE (MM)				
	A	B	C	D	E
RC 80	81	68	211	111	82
RC 100	122	72	211	152	87

OFF THE WALL 90° BEND

CODE	SIZE (MM)		
	A	B	C
RK 80	83	72	120
RK 100	123	80	160

FLEXIBLE JOINER

CODE	SIZE (MM)			
	A	B	C	D
RF 80	75	58	630	84

END CAP

CODE	SIZE (MM)
RE 80	Refrig End Cap 80mm

90° BEND

CODE	SIZE (MM)		
	A	B	C
RL 80	86	70	113
RL 100	126	112	166

JOINER

CODE	SIZE (MM)		
	A	B	C
RJ 80	85	72	50
RJ 100	125	112	50

45° BEND

CODE	SIZE (MM)		
	A	B	C
RLW 80	86	70	69
RLW 100	126	78	86

EAVE CAP

CODE	SIZE (MM)			
	A	B	C	D
RS 80	107	83	120	139
RS 100	150	126	126	146

Fans



INLINE FANS

CODE	VOLTS	L/S	STATIC
FB150	240V	90	25
FB200	240V	240	60
FB250	240V	440	90

- Ideal for use where additional airflow in a system is required
- Super strong injected molded plastic construction
- Available in three sizes
- Revolutionary design that can be snapped onto Multicut Y, Multicut D, Multicut B, EzyReducer or EzyCollars
- Support hooks for easy hanging
- Holding teeth enabling easier fitment of flexible duct core



METALFLEX™ INLINE – FANS (METAL)

CODE	VOLTS	L/S	STATIC
MIFM150	240V	90	25
MIFM200	240V	240	60
MIFM250	240V	440	90



BLAUBERG MIXED FLOW INLINE FANS

SIZE	CODE	TYPE & SPEED	VOLTS	L/S
100	BLAUTURBO100USW	Mixed Flow fan – 2 Speed	240	40-52
125	BLAUTURBO125USW	Mixed Flow fan – 2 Speed	240	61-78
150	BLAUTURBO150USW	Mixed Flow fan – 2 Speed	240	130-153
200	BLAUTURBO200USW	Mixed Flow fan – 2 Speed	240	231-289
250	BLAUTURBO250USW	Mixed Flow fan – 2 Speed	240	308-389
315	BLAUTURBO315USW	Mixed Flow fan – 2 Speed	240	489-653



METAL ROOF COWLS

SIZE	TYPE	CODE
150	600 Long General Purpose	RCOWL15
200	600 " "	RCOWL20
250	600 " "	RCOWL25
300	600 " "	RCOWL30

SMARTVENT COWLS

SIZE	TYPE	CODE
150	General Purpose	SEC708

- General purpose cowl
- Low profile
- Aluminium construction
- Low back pressure

SIZE	TYPE	CODE
150	General Purpose	SEC709

- Heavy duty cowl for high winds, exposed areas and air intake systems
- Deep vent coverage
- Added exhaust aperture area
- Aluminium construction
- High flow characteristics

SMARTVENT FANS

SIZE	FAN TYPE	LITRES	CODE
150	CENT (E)	130	SEC529
150	AXIAL (E)	80	SEC531
150	AXIAL (S)	80	SEC533

- Aluminium construction
- Low profile
- Can be used for extraction or air supply
- Low back pressure
- Ability to extend duct length up to 15m
- (E) = Airout • (S) = Air in

SMARTVENT COWL KITS

SIZE	FAN TYPE	CODE
150	General Purpose	SEC172
150	Heavy Duty	SEC710

- Aluminium construction
- Low profile
- Can be used for extraction or air supply
- Low back pressure
- Ability to extend duct length up to 15m
- (E) = Airout • (S) = Air in

SMARTVENT FAN KITS

SIZE	FAN TYPE	LITRES	CODE
150	CENT (E)	130	SEC530
150	AXIAL (E)	80	SEC532
150	AXIAL (S)	80	SEC534

- Pleasing aesthetics
- High quality for longevity of operation
- Electrical connection can be made inside or outside of roof space
- Aluminium cowl construction
- Dektite included
- All fittings supplied
- Suitable for extended duct runs, typically up to 15m
- Optional lead dektite available (extra cost).
- See components for dimensions.
- (E) = Airout • (S) = Air in

Fans



INLINE (HIGH SPEED)

CODE	DESCRIPTION	VOLTS	L/S
KS130/2E	Inline	240	95
KS200/2E	Inline	240	220
KS250/2E	Inline	240	450
KS300/2E	Inline	240	650



INLINE (LOW SPEED)

CODE	DESCRIPTION	VOLTS	L/S
KS200/4E	Inline	240	105
KS250/4E	Inline	240	240
KS300/4E	Inline	240	520
KS350/4E	Inline	240	770

Thermostats



UNIVERSAL WALL HUNG SPLIT REMOTE

APPLICATION	CODE
Universal Wall Hung Split Remote Control	WHSREMOTE

SIEMENS THERMOSTATS



MANUAL THERMOSTAT

The RAA31 is a simple manual thermostat that is ideal for the replacement market.

APPLICATION	STAGES	TEMP RANGE	FEATURES	CODE
Conventional Heating Systems	1 Heat	5 - 35°C	White. No batteries required. On/Off switch. Temperature Control.	RAA31

Honeywell THERMOSTATS

DT90 DIGITAL LINE-VOLTAGE THERMOSTAT



The DT90 family of digital room thermostats is a range of market leading products designed to provide comfort with economy in modern heating systems. Its large display and simple button interface make DT90 extremely easy to use.

Applications include control of gas or oil-fired boiler systems, underfloor heating and zoning systems.

With a modern fresh look that compliments any style of décor, and a range of valued features for users and installers alike, DT90 sets the standard for simple environmentally-friendly room thermostats.

APPLICATION	STAGES	TEMP RANGE	FEATURES	CODE
Conventional heating systems	1 Heat	5 - 35°C	White Battery Powered On/Off Switch	DT90A1008

TH6000 FOCUSPRO™ THERMOSTAT



The new FocusPRO™ 6000, 5-1-1 programmable thermostat for those customers not requiring 7 day programming. 1H/1C or 2H/2C. Soft key interface and large screen. On/Off function. Manual or auto changeover. Universal system compatibility, heating only or

heating and cooling. Dual power, battery or 24VAC hard wired. Five year warranty. The FocusPRO 6000 can be used as a direct replacement for the Magistat (T8132A) family of thermostats. It has an on/off, a longer warranty period and straight forward programming features.

APPLICATION	STAGES	TEMP RANGE	FEATURES	CODE
Conventional or heat pump systems	1 Heat & 1 Cool	Heat: 4.5 - 32°C Cool: 10 - 37°C	Auto or Manual changeover. Battery or Hardwired Power.	TH61101021
Conventional or heat pump systems	2 Heat & 2 Cool (Heat pump systems)	Heat: 4.5 - 32°C Cool: 10 - 37°C	Auto or Manual changeover. Battery or Hardwired Power.	TH62201028

Thermostats



Xe70 LINE VOLTAGE FAN COIL THERMOSTAT (RUNOUT)

Xe70 fan coil thermostat. White in colour, single piece design incorporating up to 3 switches. Dual diaphragm sensor, heat anticipator. Features a large temp dial for easy operation.

Temp range: 10 - 30°C
Contact rating @ 240Vac: 6A (R) 4A (I)

APPLICATION	STAGES	TEMP RANGE	FEATURES	CODE
4 pipe fan coil auto changeover	1 Heat & 1 Cool or	240Vac	White	T6374C1004
	2 Heat or 2 Cool		Basic version	
4 pipe fan coil auto changeover	1 Heat & 1 Cool or	240Vac	White	T6374C1012
	2 Heat or 2 Cool		On-Off	
4 pipe fan coil auto changeover	1 Heat & 1 Cool or	240Vac	White	T6375C1003
	2 Heat or 2 Cool		Fan: 1 - 2 - 3 On-Off	
Heat pump systems	1 Heat & 1 Cool	240Vac	Heat - Off - Cool	T6376B1004
			Fan: Auto - Cont.	
Heat pump systems	1 Heat & 1 Cool	240Vac	Heat - Off - Cool	T6377B1011
			Fan: Auto - Cont.	
			Fan: 1 - 2 - 3	
XE 70/90, T4360/6360			Range Stops. Bag of 20	F42006646 001
XE 70/90, T4360/6360			Replacement dial	R42006961 001



TG500 SERIES THERMOSTAT GUARDS

Thermostat guards enclose and protect thermostats against tampering, damage

and unauthorised adjustment of settings. Three sizes to suit almost all thermostats.

SIZE	DIMENSIONS	FEATURES	CODE
Small	H: 149mm W: 149mm D: 64mm	Clear Acrylic – Lockable	TG510A1001
Medium	H: 165mm W: 191mm D: 75mm	Clear Acrylic – Lockable	TG511A1000
Large	H: 184mm W: 248mm D: 86mm	Clear Acrylic – Lockable	TG512A1009



CELAIR / CLIMATE

MANUFACTURER & MODEL NO.	CODE
1-50-500, QE, QC 7	CEL 130
1-50-550, QE, QC 7/9/11B, BM500-600, AM500-600	CEL 130/A
1-50-510, QE, QC 9	CEL 131
1-50-520, QE, QC 11	CEL 132
1-50-610, QE, QC 13, 14, XL, 10-12, ST14, XP 8-10, XR 8-10	CEL 133
1-50-555, QF 13, 14B, AM700	CEL 133/A
1-50-606, XP 8-10	CEL 133/B
QE, QC 15	CEL 134
1-50-535, QE, QC 17	CEL 135
1-50-560, QF 15, 17B, AM900, BM900	CEL 135/A
XL 3	CEL 136
1-50-600, 1-50-605, XL 6, 8	CEL 137
1-50-620, XL 14	CEL 138
1-50-630, XL 16, 20	CEL 139
1-50-626, XL 16, 20	CEL 139/A
1-50-635, XL 30, XP30	CEL 140
1-50-636, XP 30 - 100mm thick	CEL 140/A
1-50-640, XL 40, 50 XP50, XP40, Email RB 1450	CEL 141
1-50-641, XL 40, 50 - 100 thick	CEL 141/A
1-50-650, XL 60, 70, XP70	CEL 142
1-50-540, ST 17, XP 12/14/15, XR12/14/15	CEL 143
1-50-561, QF 18, 18B	CEL 144
1-50-656, XP16/20	CEL 145
1-50-631, XP16/20	CEL 145/A
1-50-557, CP450/550, QP450-550, CP-SB450-550B, VSM45-55CP	CEL 146
1-50-558, CP750/850, QP750-850, CP-SB750-850B, VSM65-70CP	CEL 147
6050115, LP550-750, SBM60-65, PROFILE 600-750	CEL 148
6050165, LP850, SML70	CEL 149
6050135, LP450, SBS50, LP500	CEL 1300
6301150, DF	CEL 1301

BONAIRE / CLIMATE

MANUFACTURER & MODEL NO.	CODE
6010116 - VSM45, VSM52, VSM57, >DS125, DS95	CEL 50
6020148 - VSL63, VSL66, VSL72, DS175	CEL 51
2500119 - VSL63, VSL66, VSL72, 90mm, DS195+B170	CEL 52
6050215 - VSS50-60	CEL 53
6050315 - VSM65	CEL 54
6050415 - VSL75	CEL 55
6050220, SBS50-55, VSS50-55	CEL 56
6050320, SBS60-65, VSS60-65	CEL 57
6050420, SBS70-75, VSS70-75	CEL 58

CELDEK Pads



BRIVIS

MANUFACTURER & MODEL NO.	CODE
SUNDOWNER 11-5	CEL 100
SUNDOWNER 11-8	CEL 101
AD11-21-31, 12-22-23, 14-24-34, 15-25-35, 16	CEL 102
AD41, 42, 44, 45, 46	CEL 103
CC21, 22, 24**, 25**	CEL 104
CC31-32-41, 34**, 35**	CEL 105
AD 52, 54, 55, 56, 60	CEL 106
CC42, 44, 45, AC64**, 65**, AD86	CEL 107
L5 CONTOUR (SET OF 4 PADS)	CEL 108
L10 CONTOUR (SET OF 4 PADS)	CEL 109
L20 CONTOUR (SET OF 4 PADS)	CEL 110
L30 CONTOUR (SET OF 4 PADS)	CEL 111
L40 CONTOUR (SET OF 4 PADS)	CEL 112
L50 CONTOUR (SET OF 4 PADS)	CEL 113
L11, 12, 13 CONTOUR (SET OF 4 PADS)	CEL 114
L21, 22, 23 CONTOUR (SET OF 4 PADS)	CEL 115
L31, 32, 33 CONTOUR (SET OF 4 PADS)	CEL 116
L41, 42, 43 CONTOUR (SET OF 4 PADS)	CEL 117
L51, 52, 53 CONTOUR (SET OF 4 PADS)	CEL 118
L61, 62, 63 CONTOUR (SET OF 4 PADS)	CEL 119
** Denotes 32mm w.d.p.	
P53 PROFILE (SET OF 4 PADS)	CEL 120
P63 PROFILE (SET OF 4 PADS)	CEL 121
AD76	CEL 122
F13	CEL 123
F23/33	CEL 124
F43	CEL 125
F53	CEL 126

CARRIER

MANUFACTURER & MODEL NO.	CODE
29 CTD 4500	CEL 250
29 CTD 5300	CEL 251
29 CTD 6300	CEL 252
29 CTD 7300	CEL 253
29 CTD 8400	CEL 254
29 CTD 9000	CEL 255
29 CTD 9500	CEL 256

OMEGA

MANUFACTURER & MODEL NO.	CODE
OMEGA 160, SERIES1	CEL 500
OMEGA 210, SERIES1	CEL 501
OMEGA 260, SERIES1	CEL 502
OMEGA 160, SERIES2	CEL 503
OMEGA 210, SERIES2	CEL 504
OMEGA 260, SERIES2	CEL 505
OMEGA 160, SERIES3 50 x 15 rebate	CEL 506
OMEGA 210, SERIES3 50 x 40 rebate	CEL 507
OMEGA 260, SERIES3 50 x 65 rebate	CEL 508



BRAEMAR

MANUFACTURER & MODEL NO.	CODE
TCP 075	CEL 15
TCP 085	CEL 16
TCP 105	CEL 17
TBO 125	CEL 18
TBO 140	CEL 19
TBO 160	CEL 20
TCP 125	CEL 21
TCP 140	CEL 22
TCP 150	CEL 23
TCL 080, 111, SSA, STA, SVA200	CEL 24
TCL 090, 112, SSA, STA250	CEL 25
TCL 105, 113, SSA, STA, SVA 300, AMA, AMC 750, RPC	CEL 26
TCL 140, 115, SSA, STA, SVA400, AMA1100, RPC320S, 400D, SVC400D, AMC1100	CEL 27
TCL 160, 116, SSA, STA, SVA, SVC RPC450, AMA 1500, RPC400S	CEL 28
TCP 075	CEL 29
RPA 200	CEL 30
RPA 250, RPA 5, RPC200S, RPC250S+B54	CEL 31
RPA 300, 350, 450, 500 RPA6/8	CEL 32
RPA 600, RPA 12	CEL 33
RPA 700, 900, RPA 19	CEL 34
SSC250, SSA300	CEL 35
AP300	CEL 36
RPA 1000/1500	CEL 37
RPX 1200-1800 SPECIAL REBATES	CEL 38
RPB 1200-1800 SPECIAL REBATES	CEL 39
RPX SERIES SMALL	CEL 40

SEELEY INT., BREEZAIRE

MANUFACTURER & MODEL NO.	CODE
814544, AX 110	CEL 400
814582, AX 140	CEL 401
814612, AX 170	CEL 402
814797, CONVAIR AX80	CEL 403
EM, ES, EV, EZ 145, 165, 190, 210, EX145-210, EXH150-210	CEL 404
EM, ES, EV, EZ 105, 125, EX125, EXH130	CEL 405
814599	CEL 406
814575	CEL 407
814667, 815077, WDP 43H x 60W, EP280-340	CEL 408
814674, 815084, WDP 43H x 60W, EP280-530	CEL 409
814681, 815091, WDP 43H x 60W, EP380-530	CEL 410
815145 CONTOUR	CEL 411
815039	CEL 412
EVH 130, 160, EZD 130, 160, EZH 175 (780 x 4, 145 x 2, 039 x 1) PER SET	CEL 413
EVH 195, 215, EZD 195, 215, EZH 215 (773 x 4, 145 x 2, 039 x 1) PER SET	CEL 414
815992	CEL 415
815879, LCA, LCB 450-550, CVP 950-1100	CEL 416
815886, LCA, LCB 250-350, CVP 700	CEL 417
CPL 450-700	CEL 418
CPL 850-1100	CEL 419

CELDEK Pads



COOLBREEZE / AIR GROUP

MANUFACTURER & MODEL NO.	CODE
LP 7	CEL 150
LP 9	CEL 151
LP 12	CEL 152
LP 15	CEL 153
LP 16	CEL 154
LP 60 PR 65	CEL 155
LP 85	CEL 156
LP 95	CEL 157
LP 110, FP 120	CEL 158
LP 120, FP 140	CEL 159
LP 150, FP 170 CZ, CO, MB, MP 185	CEL 160
LP 190, FP 200	CEL 161
PR 95	CEL 162
PR 105	CEL 163
CZ, CO, MB, MP 80	CEL 164
CZ, CO, MB, MP 105	CEL 165
CZ, CO, MB, MP 130	CEL 166
CZ, CO, MB, MP 160	CEL 167
CZ, CO, MB, MP 210	CEL 168
CZ, CO, MB, MP 250 (WITHOUT CHANNEL)	CEL 169
D95 (UCCP 72 x 4) SET PRICE	CEL 300
D125 (UCCP 73 x 4) SET PRICE	CEL 301
D160 (UCCP 3 x 4) SET PRICE	CEL 302
D195 (UCCP 5 x 4) SET PRICE	CEL 303
D230 (UCCP 7 x 4) SET PRICE	CEL 304
D255 (UCCP 8 x 4) SET PRICE	CEL 305
C125 (UCCP71, UCCP74, UCCP75 x 2) SET PRICE	CEL 306
C160 (UCCP1, UCCP10, UCCP12 x 2) SET PRICE	CEL 307
C205 (UCCP2, UCCP11, UCCP13 x 2) SET PRICE	CEL 308
C240 (UCCP4, UCCP9, UCCP14 x 2) SET PRICE	CEL 309
U125 (P1, P2, P3L, P4R) SET PRICE	CEL 310
U165 (P5, P6, P7L, P8R) SET PRICE	CEL 311

GASON

MANUFACTURER & MODEL NO.	CODE
S 10, 12	CEL 180
S 15	CEL 181
S 20	CEL 182
S 25 6090 45 x 15	CEL 183

STADT / AQUA BREEZE

MANUFACTURER & MODEL NO.	CODE
N4	CEL 220
N5	CEL 221
N6	CEL 222
N7	CEL 223
N8	CEL 224
A80, A98, A119	CEL 225
A143, A162	CEL 226



ANOTRON / COOLAIR

MANUFACTURER & MODEL NO.	CODE
MACL 500	CEL 1
LPB, LPC, LPE 500, MODEL 400, LPF 400V	CEL 1/B
MACL 600	CEL 2
LPB, LPC, LPE 600, MODEL 500, LPF 500V	CEL 2/B
MACL 700	CEL 3
MACL, LPB, LPC, LPE 700 MK1, MODEL 600, LPF 600V	CEL 4
MACL, LPB, LPC, LPE 800, MODEL 700, LPF 700	CEL 5
MODEL 800, LPF 800	CEL 5/A
LPC, LPE 900, MODEL 900, LPF 900	CEL 6
MODEL 900 VARIABLE, LPF 900V	CEL 6/A
LPC, LPE, LPF 1000, MODEL 1000	CEL 7
U210,U220 (P9, P10, P11L, P12R) SET PRICE	CEL 312
U260 (P13, P14, P15L, P16R) SET PRICE	CEL 313
FD400 (P1 x 2, P2 x 4) SET PRICE	CEL 314
FD 500 (P3 x 2, P4 x 4) SET PRICE	CEL 315
LV110, SET PRICE	CEL 316
S240	CEL 317
LV155, SET PRICE	CEL 318

ASPEN FILTER PADS



CODE	DESCRIPTION
PACK1	ASPEN PAD 770 x 770 - Require 4
PACK2	ASPEN PAD 860 x 750 - Require 4
PACK3	ASPEN PAD 940 x 860 - Require 4
PACK4	ASPEN PAD 840 x 645 - Require 4
PACK5	ASPEN PAD 640 x 640 - Require 4
PACK6	ASPEN PAD 1040 x 1010 - Require 4
PACK7	ASPEN PAD 1460 x 690 - Require 6
PACK8	ASPEN PAD 1370 x 590 - Require 6
PACK9	ASPEN PAD 940 x 555 - Require 6
PACK10	ASPEN PAD 940 x 900 - Require 4
PACK11	ASPEN PAD 1050 x 590 - Require 6
PACK12	ASPEN PAD 860 x 810 - Require 4
PACK13	ASPEN PAD 1050 x 900 - Require 4
PACK14	ASPEN PAD 914 x 686 - Require 4
PACK15	ASPEN PAD 1075 x 1020 - Require 4
PACK16	ASPEN PAD 1170 x 1050 - Require 4
PACK17	ASPEN PAD 1150 x 560 - Require 6
PACK18	ASPEN PAD 1270 x 585 - Require 6
PACK19	ASPEN PAD 1000 x 950 - Require 4
PACK20	ASPEN PAD 1340 x 630 - Require 6
PACK21	ASPEN PAD 1015 x 450 - Require 4
PACK22	ASPEN PAD 1040 x 700 - Require 4
PACK23	ASPEN PAD 1040 x 860 - Require 4
PACK24	ASPEN PAD 1580 x 700 - Require 6
PACK25	ASPEN PAD 1600 x 600 - Require 6
PACK31	ASPEN PAD 750 x 500 - Require 4

Order Number

CUSTOMER:

DELIVERY ADDRESS:

CONTACT:

PHONE NO.:

DATE:

DATE REQUIRED:

TIME:

INSTALLER NAME:

INSTALLER MOBILE:

SPECIAL INSTRUCTIONS:

FLEXIBLE DUCT	R.6	R1
Multiflex 6m		
Safe-T-Flex 6m		
150		
200		
250		
300		
350		
400		

CEILING REGISTERS	SIZE	QTY
Multijet	150	
Multijet	200	
Multivent 230	150	
Multivent 230	200	
C/Box 230		

SMARTGRILLE	TYPE	QTY
380 x 510	Plain/Filtered	
400 x 750	Plain/Filtered	
400 x 1000		
Alum. Grill		
Return Air Box		
Birdwire	300 350	

BRANCH TAKE OFF		QTY
PLAIN	INSUL.	

FLOOR REGISTERS	QTY
Smart Vents	
Colour	
300 x 100	
350 x 150	

FLOOR BOOTS	DIA	QTY
300 x 100		
350 x 150		

JOINERS	SIZE	COLLARS
	150	
	200	
	250	
	300	
	350	
	400	

MOTOR DAMPERS	240V	24V
200 Metal		
250		
300		
350		

ACCESSORIES	QTY
Duct Tape	
Hanging Tape	
Chip Board 1800/600	
15mm Copper Pipe TYPE B (18m)	
15mm Gas Cock	
100mm Flue (1800 long)	
100mm Gas Cowl	
100mm 45 degree bend	
100mm 90 degree bend	

FAX TO:

ALBURY (02) 6025 8148
BALLARAT (03) 5342 9645
BASSENDEAN (08) 9279 7644

BENDIGO (03) 5444 2234
BORONIA (03) 9720 6044
CANBERRA (02) 6297 8882
DANDENONG (03) 9794 0609

GEELONG (03) 5278 4888
LONSDALE (08) 8186 2355
MURARRIE (07) 3890 5741
POORAKA (08) 8260 4770

ROOTY HILL (02) 9625 5956
SUNSHINE (03) 9312 1233
THOMASTOWN (03) 9465 9966
TRARALGON (03) 5176 5820

WAGGA WAGGA (02) 6925 2015
WANGARA (08) 6305 0333

Order Number

CUSTOMER:

DELIVERY ADDRESS:

CONTACT:

PHONE NO.:

DATE:

DATE REQUIRED:

TIME:

INSTALLER NAME:

INSTALLER MOBILE:

SPECIAL INSTRUCTIONS:

FLEXIBLE DUCT		R1
Multiflex 6m		
Safe-T-Flex 6m		
150		
200		
250		
300		
350		
400		
450		

CEILING REGISTERS	SIZE	QTY
Multicone	200	
Multicone	250	
Multivent 225 / 300	200	
Multivent 225 / 300	250	
C/Box 225 / 300		

SMARTGRILLE	TYPE	QTY
400 x 750	Filtered	
400 x 1000	Filtered	
Alum. Grill	Filtered	
Return Air Box		

DRIP TRAY			
800 x 800		1700 x 800	
1100 x 800		1400 x 1100	
1400 x 800		1400 x 1400	

COPPER TUBE PRE-INSULATED 20M ROLL		QTY
1/4 x 3/8		
1/4 x 1/2		
1/4 x 5/8		
3/8 x 5/8		
3/8 x 3/4		

BRANCH TAKE OFF		QTY
Insulated		
.....		
.....		
.....		
.....		
.....		
.....		
.....		
.....		
.....		
.....		
.....		
.....		
.....		
.....		

MOTOR DAMPERS	240V	24V
200 Metal		
250		
300		
350		
400		
450		

JOINERS	SIZE	COLLARS
	200	
	250	
	300	
	400	
	450	
	500	

ACCESSORIES		QTY
300 x 300 x 15 Vibration Rubber Pad		
Hanging Tape		
Duct Tape		
Isolation Mounts		
Chip Board 1800/600		
Other -		
-		
-		
-		

FAX TO:

BENDIGO (03) 5444 2234	GEELONG (03) 5278 4888	ROOTY HILL (02) 9625 5956	WAGGA WAGGA (02) 6925 2015
ALBURY (02) 6025 8148	LONSDALE (08) 8186 2355	SUNSHINE (03) 9312 1233	WANGARA (08) 6305 0333
BALLARAT (03) 5342 9645	MURARRIE (07) 3890 5741	THOMASTOWN (03) 9465 9966	
BASSENDEN (08) 9279 7644	POORAKA (08) 8260 4770	TRARALGON (03) 5176 5820	
DANDENONG (03) 9794 0609			

Order Number

CUSTOMER:

DELIVERY ADDRESS:

CONTACT:

PHONE NO.:

DATE:

DATE REQUIRED:

TIME:

INSTALLER NAME:

INSTALLER MOBILE:

SPECIAL INSTRUCTIONS:

COPPER TUBE PRE-INSULATED 20M ROLL	QTY
1/4 x 3/8	
1/4 x 1/2	
1/4 x 5/8	
3/8 x 5/8	
3/8 x 3/4	

PLASTIC WALL HUNG CAPPING	80mm	100mm	QTY
Duct 2400mm			
Wall Cap			
Off the Wall 90° Bend			
90° Bend			
45° Bend			
Flexible Joiner		N/A	

METAL WALL HUNG CAPPING 2400mm	Colour	QTY

FAX TO:	BENDIGO (03) 5444 2234	GEELONG (03) 5278 4888	ROOTY HILL (02) 9625 5956	WAGGA WAGGA (02) 6925 2015
ALBURY (02) 6025 8148	BORONIA (03) 9720 6044	LONSDALE (08) 8186 2355	SUNSHINE (03) 9312 1233	WANGARA (08) 6305 0333
BALLARAT (03) 5342 9645	CANBERRA (02) 6297 8882	MURARRIE (07) 3890 5741	THOMASTOWN (03) 9465 9966	
BASSENDAN (08) 9279 7644	DANDENONG (03) 9794 0609	POORAKA (08) 8260 4770	TRARALGON (03) 5176 5820	

DRAIN HOSE	QTY
16Ø x 50m Roll	

QUICK BASE	QTY
2000mm	

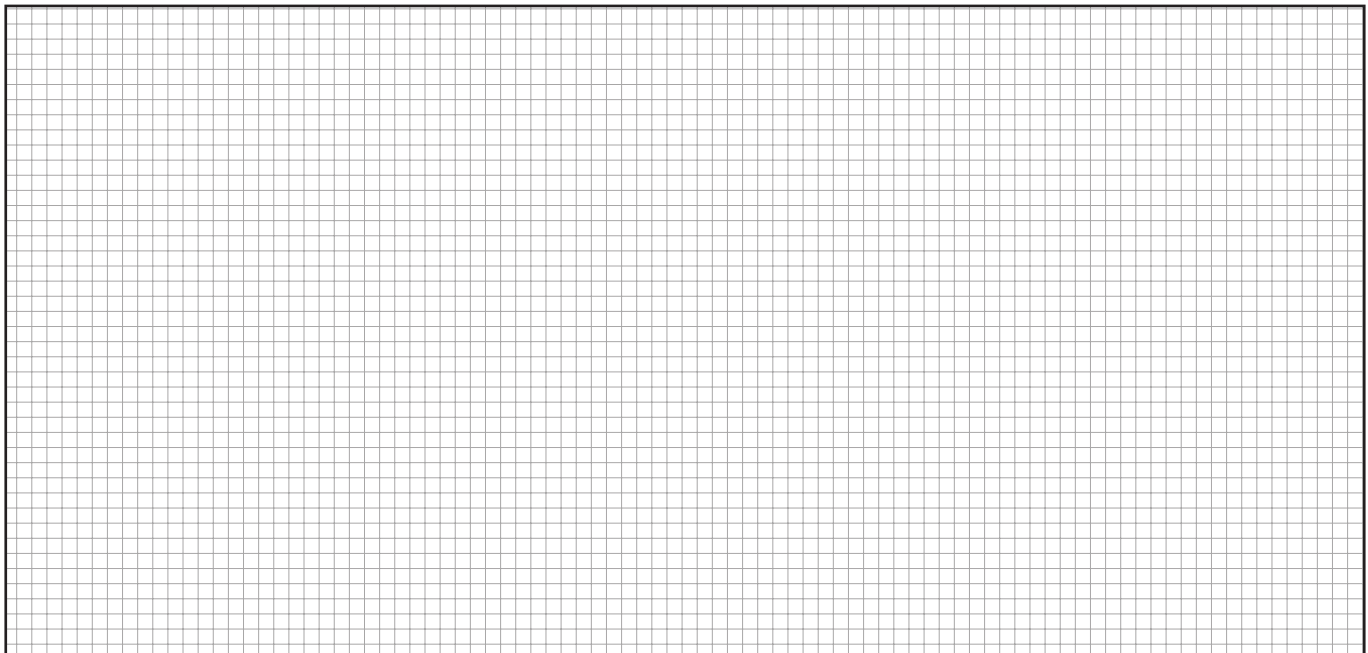
CONDENSER MOUNTS	QTY
330mm	
450mm	

VIBRATION RUBBER PAD	QTY
300mm x 300mm x10mm	
300mm x 300mm x15mm	

WALL BRACKETS	QTY
Wall Bracket – 80kg	
Wall Bracket – 120kg	
Wall Bracket – 150kg	

ROOF BRACKETS	QTY
Roof Bracket – 80kg	
Roof Bracket – 120kg	

SHEETMETAL & VENTILATION



METALFLEX:

ABN 18 007 133 057

METALFLEX REGIONAL:

ABN 50 142 651 509

METALFLEX SA:

ABN 88 084 260 837

METALFLEX WA:

ABN 98 105 291 263

THOMASTOWN (Head Office)

13-17 Brand Drive,
Thomastown, VIC 3074
Phone: (03) 9465 9922
Fax: (03) 9465 9966

ALBURY

32 Merkel Street,
Thurgoona, 2640
Phone: (02) 6025 8591
Fax: (02) 6025 8148

BALLARAT

6 Production Drive,
Alfredton, VIC 3350
Phone: (03) 5342 9657
Fax: (03) 5342 9645

BASSENDEN

9 Dyer Road,
Bassendean, WA 6054
Phone: (08) 9279 7600
Fax: (08) 9279 7644

BENDIGO

2 Fitt Court,
Bendigo, VIC 3550
Phone: (03) 5442 5689
Fax: (03) 5444 2234

BORONIA

32 Kalman Drive,
Boronia, VIC 3155
Phone: (03) 9720 5500
Fax: (03) 9720 6044

CANBERRA (Queanbeyan)

9-13 Paterson Parade,
Queanbeyan, NSW 2620
Phone: (02) 6297 2177
Fax: (02) 6297 8882

DANDENONG

85 Rodeo Drive,
Dandenong, VIC 3175
Phone: (03) 9794 0606
Fax: (03) 9794 0609

GEELONG

5 Tarkin Court,
Bell Park, VIC 3215
Phone: (03) 5277 0233
Fax: (03) 5278 4888

LONSDALE

85 O'Sullivan Beach Rd,
Lonsdale, SA 5140
Phone: (08) 8186 2311
Fax: (08) 8186 2355

MURARIE

Unit 1/49 Miller Street,
Murarrie, QLD 4172
Phone: (07) 3890 2900
Fax: (07) 3890 5741

POORAKA

9 Williams Circuit,
Pooraka, SA 5095
Phone: (08) 8368 3100
Fax: (08) 8260 4770

SUNSHINE

3/82-100 North View Drive,
Sunshine, VIC 3020
Phone: (03) 9312 1200
Fax: (03) 9312 1233

TRARALGON

1/366 Princes Highway,
Traralgon, VIC 3844
Phone: (03) 5176 0400
Fax: (03) 5176 5820

WAGGA WAGGA

8 Saxon Street,
Wagga Wagga, 2650
Phone: (02) 6925 2715
Fax: (02) 6925 2015

WANGARA

39 Prosperity Avenue,
Wangara, WA 6045
Phone: (08) 6305 0111
Fax: (08) 6305 0333

METALFLEX™ PTY LTD
www.metalflex.com.au

METALFLEX – STANDARD CONDITIONS OF TRADING AND QUOTATION (AUSTRALIA)

1. **DEFINITIONS:** In the following Standard Conditions of Trading and Quotation ('Conditions'), 'the Company' and/or 'Metalflex' shall mean Metalflex Pty Ltd, A.B.N. 18 007 133 057 and/or Metalflex Regional Pty Ltd, A.B.N. 50 142 651 509 and/or Metalflex SA Pty Ltd, A.B.N. 88 084 260 837 and/or Metalflex WA Pty Ltd, A.B.N. 98 105 291 263, and 'the Buyer' shall mean the person or entity purchasing 'the goods', being the goods the subject of Conditions.
2. **GENERAL:** Unless otherwise agreed in writing, the Company's Conditions shall be deemed incorporated in any order placed by the Buyer and accepted by the Company. Upon accepting and retaining the goods, the Buyer agrees that it has adopted and accepted the terms set out in these Conditions regardless of whether the Buyer signs for the receipt of goods. In the event of any conflict arising between these Conditions and any conditions which the Buyer might additionally seek to impose in relation to his order the Company's Conditions shall prevail. These Conditions override and replace any other conditions of the Buyer. The Company's Conditions may be changed at any time and the change will be effective upon the first transaction following the adoption by the Company of the new Conditions.
3. **QUOTATIONS:**
 - 3.1. Except where the quotation is expressly designated, written quotations are open for acceptance for thirty (30) days and are subject to re-quotation thereafter.
 - 3.2. Goods and Services tax, import duty and any other Commonwealth or State Government taxes, duties and charges (if any) included in the quotation are based upon the rates of those taxes, duties and charges at the time of quotation. All variations in the rates of such taxes, duties and charges as a result of amendment of the relevant Acts or Regulations, or changes of interpretation of the relevant Acts, Regulations, By-laws or classifications shall be to the Buyer's account.
4. **TERMS OF PAYMENT:**
 - 4.1. If credit is given, the settlement of account is payable within thirty (30) days of the end of the month of dispatch or collection of the goods (regardless of the date that the Buyer receives an invoice or statement for the goods from the Company) unless otherwise agreed in writing.
 - 4.2. In addition to the Company's other rights set out in this clause 4, the Buyer agrees that the Company shall have the right to suspend delivery to the Buyer of all or any outstanding orders if the Buyer is in default of clause 4.1.
 - 4.3. Payment is immediately due and payable if the Buyer commits any act of bankruptcy (see the Bankruptcy Act 1966) or the Buyer commits a Default Event under clause 8.1. The Buyer indemnifies the Company for all proper and reasonable costs incurred in the recovery of or attempted recovery of any overdue payments, or repossession, or attempted repossession, of any goods (including debt collector's fees or commissions and any legal fees).
 - 4.4. If the Buyer fails to make payment in accordance with clause 4.1, from 30 days after the account is payable under clause 4.1 the Buyer agrees to pay the Company interest on the outstanding amount at the rate of 2% per month as calculated by the Company.
5. **DELIVERY AND TRANSPORT:**
 - 5.1. Delivery will be at the Company's place of business. The goods are then at the Buyer's risk and the Buyer is responsible for any loss, damage or deterioration to the goods.
 - 5.2. Unless otherwise agreed in writing the Company reserves the right to charge the Buyer the cost of transportation of the goods to the destination which appears on the Buyer's order. In all cases the Buyer warrants that, in cases where delivery is to be made by road transport, there is sufficient and suitable access to the said destination including that the road surface is capable of withstanding the weight and size of the vehicles required to transport the loads involved. In the event of any additional costs or expenses being incurred by the Company in the delivery and transportation of the goods the full amount thereof will be payable on demand by the Buyer.
 - 5.3. Whilst every effort is made to deliver goods on the dates or within the periods mentioned in the contract, such dates or periods shall be deemed to be, for information purposes only, and shall not form part of the terms and conditions of the Contract unless specifically agreed in writing to be of the essence of the Contract. In the absence of such a special agreement, the Company accepts no liability whatsoever for any loss or damage of whatever nature and howsoever arising which may be suffered by the Buyer as a result of any failure on the part of the Company to deliver goods on or within such dates or periods. For imported products, the Company agrees to notify the Buyer of shipping/delivery dates as they become available.
 - 5.4. The Buyer agrees to provide at his expense (if requested by the Company) assistance to the Company's driver or Contract Carrier in off-loading heavier items and the Company shall not be liable to any extent for any injury, death or damage caused in the off-loading of goods.
6. **CREDITS/RE-STOCKING FEES:** Goods are not supplied on a sale or return basis. Subject to these terms, once the Company accepts the Buyer's order, the Buyer is obliged to take the goods although title to the goods is yet to pass. No goods may be returned to the Company for credit unless prior agreement has been given by the Company and if agreed, return of goods will only be accepted under the following conditions:
 - 6.1. Freight and packaging are prepaid and a packing list is enclosed with the goods.
 - 6.2. The goods must be in as new condition and be subject to approval by our Quality Controller.
 - 6.3. Credit will only be allowed on the original invoiced price less a restocking fee of ten (10) percent of the value.
 - 6.4. No credit will be allowed for non-standard or specially procured equipment or goods.
7. **TITLE AND SECURITY INTEREST IN GOODS:**
 - 7.1. Title to the goods so delivered shall only pass to the Buyer upon payment in full by the Buyer of all monies due by the Buyer to the Company on any account.
 - 7.2. The Buyer acknowledges and agrees that until all monies due by the Buyer to the Company on any account are paid to Company:
 - (a) that Buyer grants the Company a 'Security Interest' (as that term is defined in the Personal Property Securities Act 2009 (Cth) ('PPSA')) in the goods that secures all monies owing by the Buyer to the Company on any account;
 - (b) the Company's Security Interest in the goods (and the proceeds) is a 'Purchase Money Security Interest' (or 'PMSI') under the PPSA to the extent that it secures payment of the amounts owing in relation to the goods;
 - (c) the Company's Security Interest in the goods extends to all proceeds and any accession to the fullest extent permitted by the PPSA;
 - (d) the Company may apply any monies received from the Buyer first to satisfy any portion of debt that is unsecured, second to satisfy any portion of debt that is secured but not by a PMSI and third to satisfy any portion of debt that is secured by a PMSI, or in any other manner the Company sees fit;
 - (e) the Buyer shall hold all proceeds from the sale, lease or other disposal of any goods on trust for the Company;
 - (f) the Buyer is to keep the goods separately stored and identifiable;
 - (g) the Buyer will not grant or seek to grant any Security Interest in the goods adverse to the interest of the Company; and
 - (h) the Company's Security Interest Attaches (as that term is defined in the PPSA) to the goods when the Buyer attains possession of the goods.
 - 7.3. The Buyer agrees that the Company may register its Security Interest and the Buyer agrees to provide all information and execute all documents necessary to enable the Company to register and perfect its Security Interest in the goods under the PPSA. The Buyer agrees to promptly inform the Company in writing of any change of name of the Buyer or of any other change of details that appear on the Personal Property Securities Register and agrees that all fees in relation to registration including amendments to any registration are to be borne by the Buyer.
 - 7.4. The Buyer waives its right to receive any notice under the PPSA (including notice of a verification statement after registration or variation of a registration) unless a requirement for notice cannot be excluded under the PPSA.

METALFLEX:
ABN 18 007 133 057

METALFLEX REGIONAL:
ABN 50 142 651 509

METALFLEX SA:
ABN 88 084 260 837

METALFLEX WA:
ABN 98 105 291 263

THOMASTOWN (Head Office)
13-17 Brand Drive,
Thomastown, VIC 3074
Phone: (03) 9465 9922
Fax: (03) 9465 9966

ALBURY
32 Merkel Street,
Thurgoona, 2640
Phone: (02) 6025 8591
Fax: (02) 6025 8148

BALLARAT
6 Production Drive,
Alfredton, VIC 3350
Phone: (03) 5342 9657
Fax: (03) 5342 9645

BASSENDEN
9 Dyer Road,
Bassendean, WA 6054
Phone: (08) 9279 7600
Fax: (08) 9279 7644

BENDIGO
2 Fitt Court,
Bendigo, VIC 3550
Phone: (03) 5442 5689
Fax: (03) 5444 2234

BORONIA
32 Kalman Drive,
Boronia, VIC 3155
Phone: (03) 9720 5500
Fax: (03) 9720 6044

CANBERRA (Queanbeyan)
9-13 Paterson Parade,
Queanbeyan, NSW 2620
Phone: (02) 6297 2177
Fax: (02) 6297 8882

DANDENONG
85 Rodeo Drive,
Dandenong, VIC 3175
Phone: (03) 9794 0606
Fax: (03) 9794 0609

GEELONG
5 Tarkin Court,
Bell Park, VIC 3215
Phone: (03) 5277 0233
Fax: (03) 5278 4888

LONSDALE
85 O'Sullivan Beach Rd,
Lonsdale, SA 5160
Phone: (08) 8186 2311
Fax: (08) 8186 2355

MURARREE
Unit 1/49 Miller Street,
Murarree, QLD 4172
Phone: (07) 3890 2900
Fax: (07) 3890 5741

POORAKA
9 Williams Circuit,
Pooraka, SA 5095
Phone: (08) 8368 3100
Fax: (08) 8260 4770

SUNSHINE
3/82-100 North View Drive,
Sunshine, VIC 3020
Phone: (03) 9312 1200
Fax: (03) 9312 1233

TRARALGON
1/366 Princes Highway,
Traralgon, VIC 3844
Phone: (03) 5176 0400
Fax: (03) 5176 5820

WAGGA WAGGA
8 Saxon Street,
Wagga Wagga, 2650
Phone: (02) 6925 2715
Fax: (02) 6925 2015

WANGARA
39 Prosperity Avenue,
Wangara, WA 6045
Phone: (08) 6305 0111
Fax: (08) 6305 0333

METALFLEX™ PTY LTD
www.metalflex.com.au

METALFLEX – STANDARD CONDITIONS OF TRADING AND QUOTATION (AUSTRALIA)

8. ENFORCEMENT:

- 8.1. For the purposes of this clause 8 a "Default Event" means the occurrence of any one or more of the following events:
- (a) Default by the Buyer in the due or punctual payment of any amount which is payable to the Company by the Buyer under these Conditions or default in the due or punctual observance or performance of any obligation to be observed or performed by the Buyer under these Conditions;
 - (b) The Buyer is presumed insolvent within the meaning of section 459C(2) of the Corporations Act, is placed into liquidation, has an administrator or a receiver and manager or receiver appointed or a mortgagee takes possession of any substantial asset(s) of the Buyer or if any proceedings are issued or an event occurs intended to lead to any of those consequences or if any other action relating to insolvent debtors occurs in relation to the Buyer; or
 - (c) The Buyer disputes the terms of any title retention or granting of a Security Interest provision applicable to any goods supplied to the Buyer by the Company, or refuses to return goods to the Company the return of which the Company has demanded.
- 8.2. Upon the occurrence of a Default Event, the Company has the right (without prejudice to any other rights and remedies it may have) to recover, detach, remove and/or sell the goods or any part of it or them. The Company's employees, agents or contractors may without notice enter any place the Company believes the goods to be without committing a trespass. The Company will have no obligation to make good any damage caused by such inspection, search, recovery, detachment or removal of the goods. The Company will not be liable for and the Buyer will indemnify and keep the Company indemnified from and against any costs, claims, damages or losses expended or suffered by the Company, whether or not contemplated by the parties, in recovering any such goods (including legal costs on a full indemnity basis). If there is any inconsistency between the Company's rights under this clause 8 and its rights under Chapter 4 of the PPSA, this clause 8 prevails.
- 8.3 If Chapter 4 of the PPSA would otherwise apply to the enforcement of the Company's Security Interest, the Buyer agrees that the Company contracts out of all obligations to give notice and any restrictions on the Company's rights to enforce its Security Interest, to any and all of the extent provided under section 115 of the PPSA.

9. WARRANTY:

- 9.1. The Company does not make any warranties in relation to defects in material or workmanship of the goods . and excludes all liability in relation to the goods to the fullest extent permitted by law. To the extent that any such warranty may not be excluded the Company's liability is limited, at the Company's election, to the replacement or supply of equivalent goods, or the payment of the cost of having the goods replaced.
- 9.2. The Buyer is responsible for checking the goods at the time of delivery. Claims for shortages of goods must be made immediately in writing and will not be considered by the Company unless the claim is made within 48 hours of delivery of the goods to the Buyer's nominated address on the Buyer's order.

ACCEPTANCE:

The Applicant applies to Metalflex Pty Ltd and/or Metalflex Regional Pty Ltd and/or Metalflex SA Pty Ltd and/or Metalflex WA Pty Ltd for credit. Metalflex A.B.N. is 18 007 133 057. Metalflex Regional A.B.N. is 50 142 651 509. Metalflex SA A.B.N is 88 084 260 837. Metalflex WA A.B.N is 98 105 291 263. The Applicant acknowledges receipt of and accepts the present Standard Conditions of Trading and Quotation and acknowledges that the Standard Conditions of Trading and Quotation may be changed by Metalflex from time to time.

I/We warrant that I am/we are authorized to sign this Credit Application on behalf of the Applicant.

SIGNATURE: _____ SIGNATURE: _____
 NAME (Block Letters): _____ NAME (Block Letters): _____
 POSITION: _____ POSITION: _____
 DATE: _____ DATE: _____

PERSONAL GUARANTEE, INDEMNITY AND CHARGE

I/We note that the trading Terms and Conditions have been provided to us by Metalflex, and that I/we have read and understood them. In consideration of Metalflex supplying the goods on credit to the applicant:

I/We (and if more than one, jointly and severally) agree that if the Applicant at any time fails to pay any money due to Metalflex or fails to perform or observe any term or condition of credit or sale to be performed by the Applicant, I/we will forthwith pay to Metalflex all money due and payable by the Applicant (or any subsequent owner of the business name of the Applicant) to Metalflex. No demand by Metalflex for payment shall be necessary.

I/We further agree to indemnify Metalflex against any loss of money due to Metalflex by the Applicant under or relating to any sale by or credit granted by Metalflex to the Applicant (or any subsequent owner of the business name of the Applicant) including expenses and legal costs associated with the collection of outstanding monies and including any loss suffered by Metalflex as a result of the Applicant's failure to perform or observe any term or condition of credit or sale. I/We now charge my/our interest in any real property registered in my/our name/s in favour of Metalflex to secure this Guarantee and Indemnity and authorize the lodgment of a caveat to support this charge.

I/We (and if more than one, jointly and severally) agree that this Guarantee and Indemnity is a continuing Guarantee and Indemnity and will not be invalidated, released or discharged by any event which would or might so invalidate, release or discharge the Guarantee and Indemnity, including (but not limited to) the giving of time, the variation of the terms and conditions of credit or sale, the alteration of the composition of the Applicant or the release of the Applicant or any co-guarantor. I/We understand this Guarantee and Indemnity binds me/us personally.

DIRECTOR SIGNATURE: _____ DIRECTOR SIGNATURE: _____
 NAME (Block Letters): _____ NAME (Block Letters): _____
 WITNESS SIGNATURE: _____ WITNESS SIGNATURE: _____
 WITNESS NAME (Block Letters): _____ WITNESS NAME (Block Letters): _____
 DATE: _____ DATE: _____

Application for Credit Account

--	--	--	--	--	--	--	--

Branch _____

To: Metalflex Pty Ltd Metalflex Pty Ltd Metalflex (S.A.) Pty Ltd Metalflex (W.A.) Pty Ltd and Air Plus Pty Ltd jointly and severally and each of their subsidiaries, affiliates and related entities and any successors and assigns [Metalflex].

1. APPLICANT DETAILS ["Customer"] (please use block letters)

ACCOUNT NAME TO BE USED: _____ ABN: _____

POSTAL ADDRESS: _____

POSTCODE: _____

EMAIL ADDRESS: _____

BUSINESS ADDRESS: _____

POSTCODE: _____

TELEPHONE NO: _____ FAX NO: _____ MOBILE NO: _____

ACCOUNTS PAYABLE CONTACT: _____ DIRECT PHONE: _____

PERSON RESPONSIBLE FOR PURCHASING: _____ DIRECT PHONE: _____

THE CREDIT SOUGHT BY THE CUSTOMER: BUSINESS USE PERSONAL USE (✓ INDICATE APPLICABLE)

NATURE OF BUSINESS (✓ INDICATE APPLICABLE)

AIRCONDITIONING REFRIGERATION AU PLUMBER

OTHER

THE CUSTOMER IS (complete only ONE of the following sections)

COMPANY

REGISTERED BUSINESS NAME: _____

REGISTERED OFFICE ADDRESS: _____

A.C.N.: _____ PAID UP CAPITAL: \$ _____ NORMAL CAPITAL: \$ _____

TRUSTEE? YES NO (if yes, please provide details)

PARTNERSHIP

IS PARTNERSHIP NAME REGISTERED: YES NO

NO. OF YEARS IN PARTNERSHIP: _____

SOLE TRADER/INDIVIDUAL

SPOUSE/ PARTNER: _____

NAME AND ADDRESS OF CLOSEST LIVING RELATIVE NOT LIVING WITH YOU: _____

OTHER (give full details)

HAVE YOU EVER BEEN AN ACCOUNT CUSTOMER WITH METALFLEX OR AIR PLUS BEFORE?

YES NO (if yes, please provide details)

Support Centre
118 Burwood Hwy
Burwood Vic 3125
Tel: (03) 9463 3400
www.Metalflex.com.au
www.Airplus.com.au

Metalflex Ltd
007133 057
Metalflex (S.A.) Pty Ltd
084 260 837
Metalflex (W.A.) Pty Ltd
105 291 263
Metalflex Pty Ltd
142 651 509

Air Plus Pty Ltd
135 270 718

Once you have read the form carefully, please complete all relevant detail and take the form to your nearest branch. The manager will review the form, and if necessary assist you in completing the form. You can also discuss with the manager your particular requirement and product preferences.

This page must be completed in every case.

1. INDIVIDUAL DETAILS

FULL PARTICULARS OF SOLE TRADER, ALL PARTNERS OR ALL DIRECTORS:

	Private Phone	Date of Birth	Drivers Licence No.
1. Name:		/ /	
Address:			
2. Name:		/ /	
Address:			
3. Name:		/ /	
Address:			
4. Name:		/ /	
Address:			

2. BUSINESS PREMISES

OWNED LEASED MORTGAGED (✓ INDICATE APPLICABLE)

DETAILS OF LESSOR/AGENT OR MORTGAGE: _____

3. TRADE REFERENCES (Major suppliers where you are currently buying)

1. Name: _____ Suburb: _____ Phone No: _____
 2. Name: _____ Suburb: _____ Phone No: _____
 3. Name: _____ Suburb: _____ Phone No: _____

4. BANKER

Bank Name: _____ Branch Address: _____

5. CREDIT LIMIT REQUESTED

ANTICIPATED MONTHLY CREDIT REQUIRED: \$ _____

6. MEANS & ABILITY

The Customer warrants that it is solvent and will not become insolvent by incurring debts in respect of goods or services to be supplied by Metalflex. The customer repeats this representation every time it places any order with Metalflex.

7. ACCEPTANCE

Metalflex will be taken to have approved the Customer's credit account if Metalflex permits it to take goods or services on credit. The Customer acknowledges that Metalflex may in its discretion cancel or amend any credit limit at any time without notice.

8. CONSENT

The customer consents to Metalflex sending it electronic messages.

9. METALFLEX ENTITIES

The customer agrees that the information in this application and Metalflex Terms and Conditions apply to all transactions between the Customer and Metalflex

10. CREDIT INFORMATION

The Directors of the Customer, if the Customer is a company, and the Customer itself if the Customer is not a company, irrevocably authorise Metalflex to make any inquiries deemed necessary in its discretion to investigate the Directors of the Customer and the Customers' creditworthiness from time to time. Without limitation, it includes any trade reference, bankers' report, any credit provider or credit reporting agency, whether trade or personal. This authorisation permits Metalflex to give, receive or exchange any such authorised credit information. It applies to any interested person defined in the Personal Property Securities Act 2009 (Cth).

11. PRODUCT WARRANTY

To the extent permitted by law, and subject to Metalflex's Terms and Conditions, the Customer agrees that Metalflex gives no warranties other than any applicable manufacturer's warranties.

12. TERMS AND CONDITIONS

The Customer agrees that Metalflex Terms and Conditions located on its website, current at the time an order for goods or services is accepted by Metalflex apply to the supply of goods or services. A copy of the Metalflex Terms and Conditions may be obtained from any Metalflex branch or downloaded from Metalflex's website www.metalflex.com.au

13. PERSON COMPLETING THIS APPLICATION (If Applicant is a partnership all partners must sign)

Position: _____
 Name: _____
 Address (private): _____
 Postcode: _____ Telephone: _____

SIGNATURE: _____ DATE: / / _____

The person who signs this application warrants that he or she is duly authorised to sign and complete on the Customer's behalf and that the information contained in it is true and not misleading by omission or otherwise in any material respect.

OFFICE USE ONLY

Account Type: _____

Comments: _____

Manager: _____

Date Approved: / / _____

Available BROCHURES

DUCTED EVAPORATIVE COOLING



DUCTED GAS HEATING



DUCTED REFRIGERATED AIR CONDITIONING



ZONING SYSTEMS



CALENDAR

2014 REFERENCE CALENDAR

JANUARY

S	M	T	W	T	F	S
			1	2	3	4
5	6	7	8	9	10	11
12	13	14	15	16	17	18
19	20	21	22	23	24	25
26	27	28	29	30	31	

FEBRUARY

S	M	T	W	T	F	S
						1
2	3	4	5	6	7	8
9	10	11	12	13	14	15
16	17	18	19	20	21	22
23	24	25	26	27	28	

MARCH

S	M	T	W	T	F	S
30	31					1
2	3	4	5	6	7	8
9	10	11	12	13	14	15
16	17	18	19	20	21	22
23	24	25	26	27	28	29

APRIL

S	M	T	W	T	F	S
		1	2	3	4	5
6	7	8	9	10	11	12
13	14	15	16	17	18	19
20	21	22	23	24	25	26
27	28	29	30			

MAY

S	M	T	W	T	F	S
				1	2	3
4	5	6	7	8	9	10
11	12	13	14	15	16	17
18	19	20	21	22	23	24
25	26	27	28	29	30	31

JUNE

S	M	T	W	T	F	S
1	2	3	4	5	6	7
8	9	10	11	12	13	14
15	16	17	18	19	20	21
22	23	24	25	26	27	28
29	30					

JULY

S	M	T	W	T	F	S
		1	2	3	4	5
6	7	8	9	10	11	12
13	14	15	16	17	18	19
20	21	22	23	24	25	26
27	28	29	30	31		

AUGUST

S	M	T	W	T	F	S
31					1	2
3	4	5	6	7	8	9
10	11	12	13	14	15	16
17	18	19	20	21	22	23
24	25	26	27	28	29	30

SEPTEMBER

S	M	T	W	T	F	S
	1	2	3	4	5	6
7	8	9	10	11	12	13
14	15	16	17	18	19	20
21	22	23	24	25	26	27
28	29	30				

OCTOBER

S	M	T	W	T	F	S
			1	2	3	4
5	6	7	8	9	10	11
12	13	14	15	16	17	18
19	20	21	22	23	24	25
26	27	28	29	30	31	

NOVEMBER

S	M	T	W	T	F	S
30						1
2	3	4	5	6	7	8
9	10	11	12	13	14	15
16	17	18	19	20	21	22
23	24	25	26	27	28	29

DECEMBER

S	M	T	W	T	F	S
	1	2	3	4	5	6
7	8	9	10	11	12	13
14	15	16	17	18	19	20
21	22	23	24	25	26	27
28	29	30	31			

2015 REFERENCE CALENDAR

JANUARY

S	M	T	W	T	F	S
				1	2	3
4	5	6	7	8	9	10
11	12	13	14	15	16	17
18	19	20	21	22	23	24
25	26	27	28	29	30	31

FEBRUARY

S	M	T	W	T	F	S
1	2	3	4	5	6	7
8	9	10	11	12	13	14
15	16	17	18	19	20	21
22	23	24	25	26	27	28

MARCH

S	M	T	W	T	F	S
1	2	3	4	5	6	7
8	9	10	11	12	13	14
15	16	17	18	19	20	21
22	23	24	25	26	27	28
29	30	31				

APRIL

S	M	T	W	T	F	S
			1	2	3	4
5	6	7	8	9	10	11
12	13	14	15	16	17	18
19	20	21	22	23	24	25
26	27	28	29	30		

MAY

S	M	T	W	T	F	S
31					1	2
3	4	5	6	7	8	9
10	11	12	13	14	15	16
17	18	19	20	21	22	23
24	25	26	27	28	29	30

JUNE

S	M	T	W	T	F	S
	1	2	3	4	5	6
7	8	9	10	11	12	13
14	15	16	17	18	19	20
21	22	23	24	25	26	27
28	29	30				

JULY

S	M	T	W	T	F	S
			1	2	3	4
5	6	7	8	9	10	11
12	13	14	15	16	17	18
19	20	21	22	23	24	25
26	27	28	29	30	31	

AUGUST

S	M	T	W	T	F	S
30	31					1
2	3	4	5	6	7	8
9	10	11	12	13	14	15
16	17	18	19	20	21	22
23	24	25	26	27	28	29

SEPTEMBER

S	M	T	W	T	F	S
		1	2	3	4	5
6	7	8	9	10	11	12
13	14	15	16	17	18	19
20	21	22	23	24	25	26
27	28	29	30			

OCTOBER

S	M	T	W	T	F	S
				1	2	3
4	5	6	7	8	9	10
11	12	13	14	15	16	17
18	19	20	21	22	23	24
25	26	27	28	29	30	31

NOVEMBER

S	M	T	W	T	F	S
1	2	3	4	5	6	7
8	9	10	11	12	13	14
15	16	17	18	19	20	21
22	23	24	25	26	27	28
29	30					

DECEMBER

S	M	T	W	T	F	S
		1	2	3	4	5
6	7	8	9	10	11	12
13	14	15	16	17	18	19
20	21	22	23	24	25	26
27	28	29	30	31		



www.metalflex.com.au

VIC

BALLARAT

6 Production Drive,
Alfredton, VIC 3350
Phone: (03) 5342 9657
Fax: (03) 5342 9645

BENDIGO

2 Fitt Court,
Bendigo, VIC 3550
Phone: (03) 5442 5689
Fax: (03) 5444 2234

BORONIA

32 Kalman Drive,
Boronia, VIC 3155
Phone: (03) 9720 5500
Fax: (03) 9720 6044

DANDENONG

85 Rodeo Drive,
Dandenong, VIC 3175
Phone: (03) 9794 0606
Fax: (03) 9794 0609

GEELONG

5 Tarkin Court,
Bell Park, VIC 3215
Phone: (03) 5277 0233
Fax: (03) 5278 4888

SUNSHINE

3/82-100 North View Drive,
Sunshine, VIC 3020
Phone: (03) 9312 1200
Fax: (03) 9312 1233

THOMASTOWN

13-17 Brand Drive,
Thomastown, VIC 3074
Phone: (03) 9465 9922
Fax: (03) 9465 9966

TRARALGON

1/366 Princes Highway,
Traralgon, VIC 3844
Phone: (03) 5176 0400
Fax: (03) 5176 5820

NSW

ALBURY

32 Merkel Street,
Thurgoona, NSW 2640
Phone: (02) 6025 8591
Fax: (02) 6025 8148

ROOTY HILL

4 Kellogg Road,
Rooty Hill, 2766
Phone: (02) 9832 8951
Fax: (02) 9625 5956

WAGGA WAGGA

8 Saxon Street,
Wagga Wagga, NSW 2650
Phone: (02) 6925 2715
Fax: (02) 6925 2015

ACT

CANBERRA

9-13 Paterson Parade,
Queanbeyan, NSW 2620
Phone: (02) 6297 2177
Fax: (02) 6297 8882

QLD

MURARRIE

Unit 1/49 Miller Street,
Murarrie, QLD 4172
Phone: (07) 3890 2900
Fax: (07) 3890 5741

17 LOCATIONS NATIONALLY

- Victoria
- New South Wales
- South Australia
- Western Australia
- Queensland
- ACT



SA

POORAKA

9 Williams Circuit,
Pooraka, SA 5095
Phone: (08) 8368 3100
Fax: (08) 8260 4770

LONSDALE

85 O'Sullivan Beach Road,
Lonsdale, SA 5160
Phone: (08) 8186 2311
Fax: (08) 8186 2355

WA

BASSENDEAN

9 Dyer Road,
Bassendean, WA 6054
Phone: (08) 9279 7600
Fax: (08) 9279 7644

WANGARA

39 Prosperity Avenue,
Wangara, WA 6065
Phone: (08) 6305 0111
Fax: (08) 6305 0333

METALFLEX VIC
ABN 18 007 133 057
METALFLEX REGIONAL
ABN 50 142 651 509
METALFLEX SA
ABN 88 084 260 837
METALFLEX WA
ABN 98 105 291 263